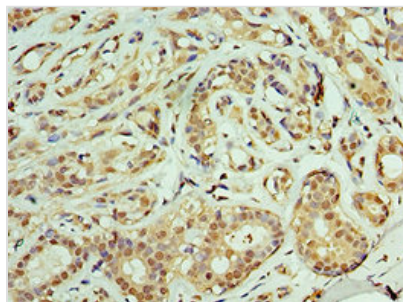




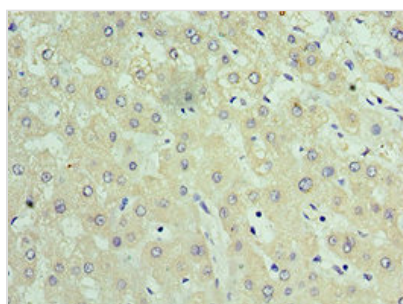
TIMM21 Antibody

Product Code	CSB-PA871586ESR1HU
Storage	Upon receipt, store at -20°C or -80°C. Avoid repeated freeze.
Uniprot No.	Q9BVV7
Immunogen	Recombinant Human Mitochondrial import inner membrane translocase subunit Tim21 protein (1-248AA)
Raised In	Rabbit
Species Reactivity	Human
Tested Applications	ELISA, IHC; Recommended dilution: IHC:1:20-1:200
Form	Liquid
Conjugate	Non-conjugated
Storage Buffer	PBS with 0.02% sodium azide, 50% glycerol, pH7.3.
Purification Method	Antigen Affinity Purified
Isotype	IgG
Clonality	Polyclonal
Alias	Mitochondrial import inner membrane translocase subunit Tim21 (TIM21-like protein, mitochondrial), TIMM21, C18orf55 TIM21
Immunogen Species	Homo sapiens (Human)
Research Area	Signal Transduction
Target Names	TIMM21

Image



Immunohistochemistry of paraffin-embedded human breast cancer using CSB-PA871586ESR1HU at dilution of 1:100



Immunohistochemistry of paraffin-embedded human liver tissue using CSB-PA871586ESR1HU at dilution of 1:100



Usage

For Research Use Only. Not for use in diagnostic or therapeutic procedures.