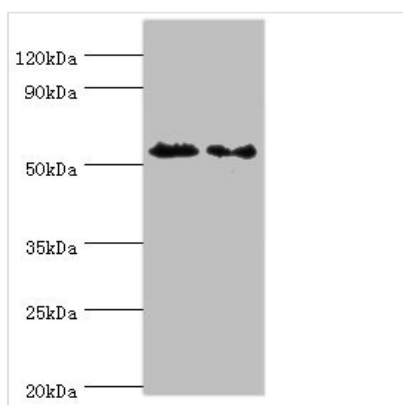




ATG4C Antibody

Product Code	CSB-PA836199ESR2HU
Storage	Upon receipt, store at -20°C or -80°C. Avoid repeated freeze.
Uniprot No.	Q96DT6
Immunogen	Recombinant Human Cysteine protease ATG4C protein (259-458AA)
Raised In	Rabbit
Species Reactivity	Human, Mouse
Tested Applications	ELISA, WB, IHC; Recommended dilution: WB:1:200-1:1000, IHC:1:20-1:200
Form	Liquid
Conjugate	Non-conjugated
Storage Buffer	PBS with 0.02% sodium azide, 50% glycerol, pH7.3.
Purification Method	Antigen Affinity Purified
Isotype	IgG
Clonality	Polyclonal
Alias	Cysteine protease ATG4C (EC 3.4.22.-) (AUT-like 3 cysteine endopeptidase) (Autophagin-3) (Autophagy-related cysteine endopeptidase 3) (Autophagy-related protein 4 homolog C), ATG4C, APG4C AUTL1 AUTL3
Immunogen Species	Homo sapiens (Human)
Research Area	Cancer
Target Names	ATG4C

Image



Western blot

All lanes: ATG4C antibody at 9µg/ml

Lane 1: Mouse lung tissue

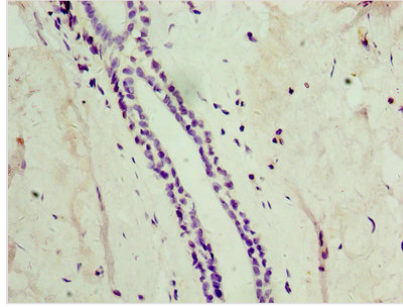
Lane 2: HepG2 whole cell lysate

Secondary

Goat polyclonal to rabbit IgG at 1/10000 dilution

Predicted band size: 52 kDa

Observed band size: 52 kDa



Immunohistochemistry of paraffin-embedded human breast cancer using CSB-PA836199ESR2HU at dilution of 1:100

Usage

For Research Use Only. Not for use in diagnostic or therapeutic procedures.