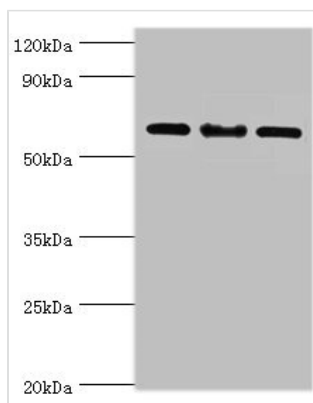




IL22RA1 Antibody

Product Code	CSB-PA822717ESR2HU
Storage	Upon receipt, store at -20°C or -80°C. Avoid repeated freeze.
Uniprot No.	Q8N6P7
Immunogen	Recombinant Human Interleukin-22 receptor subunit alpha-1 protein (16-230AA)
Raised In	Rabbit
Species Reactivity	Human, Mouse
Tested Applications	ELISA, WB, IHC; Recommended dilution: WB:1:500-1:2000, IHC:1:20-1:200
Form	Liquid
Conjugate	Non-conjugated
Storage Buffer	PBS with 0.02% sodium azide, 50% glycerol, pH7.3.
Purification Method	Antigen Affinity Purified
Isotype	IgG
Clonality	Polyclonal
Alias	Interleukin-22 receptor subunit alpha-1 (IL-22 receptor subunit alpha-1) (IL-22R-alpha-1) (IL-22RA1) (Cytokine receptor class-II member 9) (Cytokine receptor family 2 member 9) (CRF2-9) (ZcytoR11), IL22RA1, IL22R
Immunogen Species	Homo sapiens (Human)
Research Area	Immunology
Target Names	IL22RA1

Image



Western blot

All lanes: IL22RA1 antibody at 10µg/ml

Lane 1: Mouse spleen tissue

Lane 2: HepG2 whole cell lysate

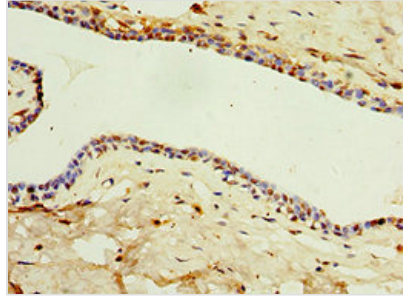
Lane 3: 293T whole cell lysate

Secondary

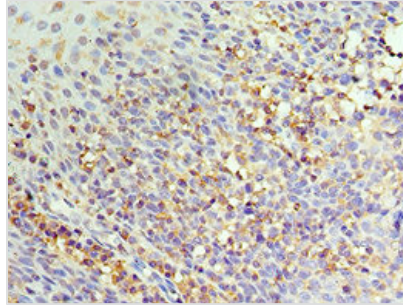
Goat polyclonal to rabbit IgG at 1/10000 dilution

Predicted band size: 63 kDa

Observed band size: 63 kDa



Immunohistochemistry of paraffin-embedded human breast cancer using CSB-PA822717ESR2HU at dilution of 1:100



Immunohistochemistry of paraffin-embedded human tonsil tissue using CSB-PA822717ESR2HU at dilution of 1:100

Usage

For Research Use Only. Not for use in diagnostic or therapeutic procedures.