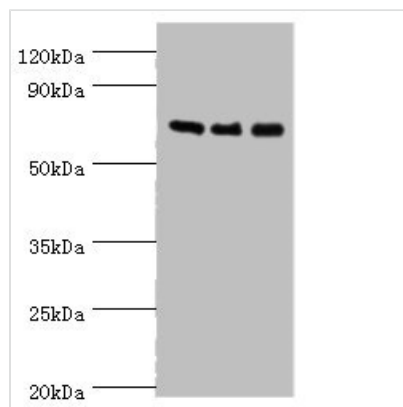




# AKAP10 Antibody

<b>Product Code</b>	CSB-PA001519ESR1HU
<b>Storage</b>	Upon receipt, store at -20°C or -80°C. Avoid repeated freeze.
<b>Uniprot No.</b>	O43572
<b>Immunogen</b>	Recombinant Human A-kinase anchor protein 10, mitochondrial protein (413-662AA)
<b>Raised In</b>	Rabbit
<b>Species Reactivity</b>	Human
<b>Tested Applications</b>	ELISA, WB, IHC; Recommended dilution: WB:1:200-1:1000, IHC:1:20-1:200
<b>Form</b>	Liquid
<b>Conjugate</b>	Non-conjugated
<b>Storage Buffer</b>	PBS with 0.02% sodium azide, 50% glycerol, pH7.3.
<b>Purification Method</b>	Antigen Affinity Purified
<b>Isotype</b>	IgG
<b>Clonality</b>	Polyclonal
<b>Alias</b>	A-kinase anchor protein 10, mitochondrial (AKAP-10) (Dual specificity A kinase-anchoring protein 2) (D-AKAP-2) (Protein kinase A-anchoring protein 10) (PRKA10), AKAP10
<b>Immunogen Species</b>	Homo sapiens (Human)
<b>Research Area</b>	Signal Transduction
<b>Target Names</b>	AKAP10

## Image



### Western blot

All lanes: AKAP10 antibody at 7µg/ml

Lane 1: 293T whole cell lysate

Lane 2: Hela whole cell lysate

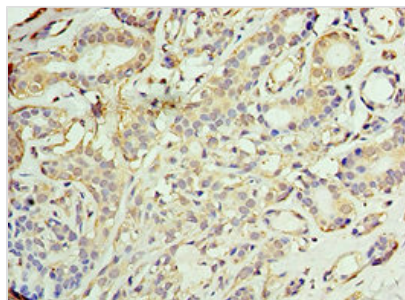
Lane 3: HepG2 whole cell lysate

Secondary

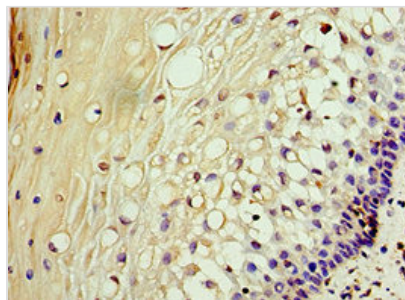
Goat polyclonal to rabbit IgG at 1/10000 dilution

Predicted band size: 74 kDa

Observed band size: 74 kDa



Immunohistochemistry of paraffin-embedded human breast cancer using CSB-PA001519ESR1HU at dilution of 1:100



Immunohistochemistry of paraffin-embedded human cervical cancer using CSB-PA001519ESR1HU at dilution of 1:100

**Usage**

For Research Use Only. Not for use in diagnostic or therapeutic procedures.