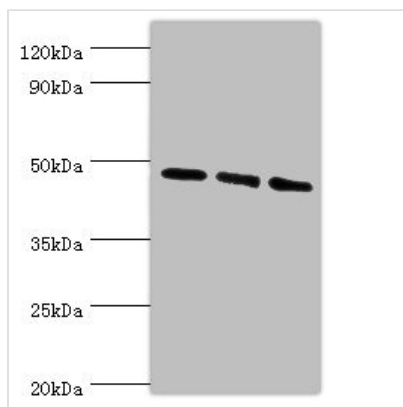




WIPI1 Antibody

| | |
|----------------------------|--|
| Product Code | CSB-PA705810ESR2HU |
| Storage | Upon receipt, store at -20°C or -80°C. Avoid repeated freeze. |
| Uniprot No. | Q5MNZ9 |
| Immunogen | Recombinant Human WD repeat domain phosphoinositide-interacting protein 1 protein (187-446AA) |
| Raised In | Rabbit |
| Species Reactivity | Human, Mouse |
| Tested Applications | ELISA, WB, IHC; Recommended dilution: WB:1:500-1:2000, IHC:1:20-1:200 |
| Form | Liquid |
| Conjugate | Non-conjugated |
| Storage Buffer | PBS with 0.02% sodium azide, 50% glycerol, pH7.3. |
| Purification Method | Antigen Affinity Purified |
| Isotype | IgG |
| Clonality | Polyclonal |
| Alias | WD repeat domain phosphoinositide-interacting protein 1 (WIPI-1) (Atg18 protein homolog) (WD40 repeat protein interacting with phosphoinositides of 49 kDa) (WIPI 49 kDa), WIPI1, WIPI49 |
| Immunogen Species | Homo sapiens (Human) |
| Research Area | Signal Transduction |
| Target Names | WIPI1 |

Image



Western blot

All lanes: WIPI1 antibody at 6µg/ml

Lane 1: 293T whole cell lysate

Lane 2: NIH/3T3 whole cell lysate

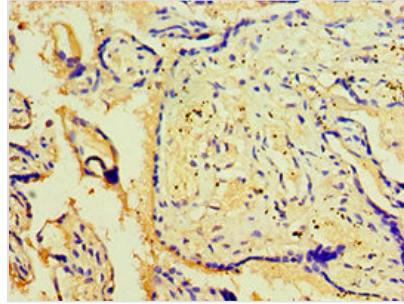
Lane 3: Mouse skeletal muscle tissue

Secondary

Goat polyclonal to rabbit IgG at 1/10000 dilution

Predicted band size: 49 kDa

Observed band size: 49 kDa



Immunohistochemistry of paraffin-embedded human placenta tissue using CSB-PA705810ESR2HU at dilution of 1:100

Usage

For Research Use Only. Not for use in diagnostic or therapeutic procedures.