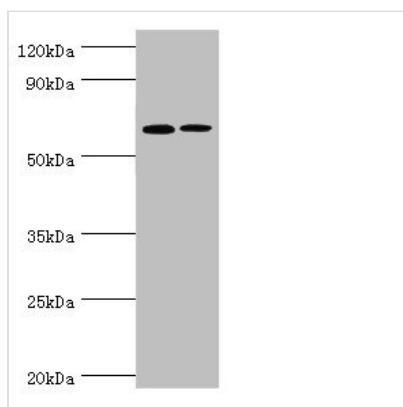




# IL27RA Antibody

|                            |  |
|----------------------------|--|
| <b>Product Code</b>        | CSB-PA761488ESR1HU   |
| <b>Storage</b>             | Upon receipt, store at -20°C or -80°C. Avoid repeated freeze.  |
| <b>Uniprot No.</b>         | Q6UWB1   |
| <b>Immunogen</b>           | Recombinant Human Interleukin-27 receptor subunit alpha protein (33-283AA)   |
| <b>Raised In</b>           | Rabbit   |
| <b>Species Reactivity</b>  | Human, Rat   |
| <b>Tested Applications</b> | ELISA, WB, IHC; Recommended dilution: WB:1:500-1:2000, IHC:1:20-1:200  |
| <b>Form</b>                | Liquid   |
| <b>Conjugate</b>           | Non-conjugated   |
| <b>Storage Buffer</b>      | PBS with 0.02% sodium azide, 50% glycerol, pH7.3.  |
| <b>Purification Method</b> | Antigen Affinity Purified  |
| <b>Isotype</b>             | IgG  |
| <b>Clonality</b>           | Polyclonal   |
| <b>Alias</b>               | Interleukin-27 receptor subunit alpha (IL-27 receptor subunit alpha) (IL-27R subunit alpha) (IL-27R-alpha) (IL-27RA) (Cytokine receptor WSX-1) (Cytokine receptor-like 1) (Type I T-cell cytokine receptor) (TCCR) (ZcytoR1), IL27RA, CRL1 TCCR WSX1 |
| <b>Immunogen Species</b>   | Homo sapiens (Human)   |
| <b>Research Area</b>       | Immunology   |
| <b>Target Names</b>        | IL27RA   |

## Image



### Western blot

All lanes: IL27RA antibody at 9µg/ml

Lane 1: Rat heart tissue

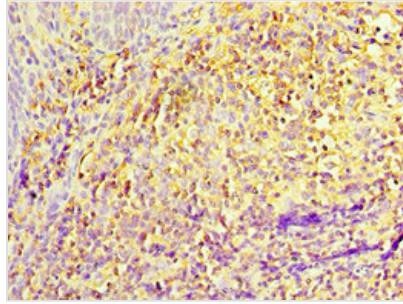
Lane 2: Rat brain tissue

Secondary

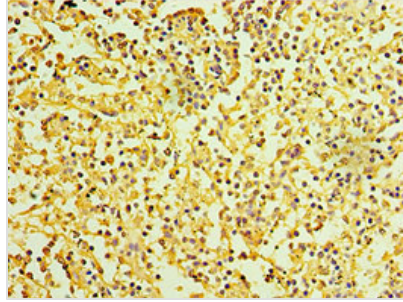
Goat polyclonal to rabbit IgG at 1/10000 dilution

Predicted band size: 69 kDa

Observed band size: 69 kDa



Immunohistochemistry of paraffin-embedded human tonsil tissue using CSB-PA761488ESR1HU at dilution of 1:100



Immunohistochemistry of paraffin-embedded human spleen tissue using CSB-PA761488ESR1HU at dilution of 1:100

## Usage

For Research Use Only. Not for use in diagnostic or therapeutic procedures.