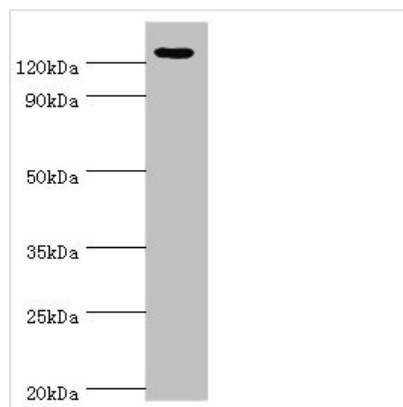




# NLRP2 Antibody

<b>Product Code</b>	CSB-PA865163ESR1HU
<b>Storage</b>	Upon receipt, store at -20°C or -80°C. Avoid repeated freeze.
<b>Uniprot No.</b>	Q9NX02
<b>Immunogen</b>	Recombinant Human NACHT, LRR and PYD domains-containing protein 2 protein (1-220AA)
<b>Raised In</b>	Rabbit
<b>Species Reactivity</b>	Human
<b>Tested Applications</b>	ELISA, WB, IHC; Recommended dilution: WB:1:200-1:1000, IHC:1:20-1:200
<b>Form</b>	Liquid
<b>Conjugate</b>	Non-conjugated
<b>Storage Buffer</b>	PBS with 0.02% sodium azide, 50% glycerol, pH7.3.
<b>Purification Method</b>	Antigen Affinity Purified
<b>Isotype</b>	IgG
<b>Clonality</b>	Polyclonal
<b>Alias</b>	NACHT, LRR and PYD domains-containing protein 2 (Nucleotide-binding site protein 1) (PYRIN domain and NACHT domain-containing protein 1) (PYRIN-containing APAF1-like protein 2), NLRP2, NALP2 NBS1 PAN1 PYPAF2
<b>Immunogen Species</b>	Homo sapiens (Human)
<b>Research Area</b>	Cell Biology
<b>Target Names</b>	NLRP2

## Image



### Western blot

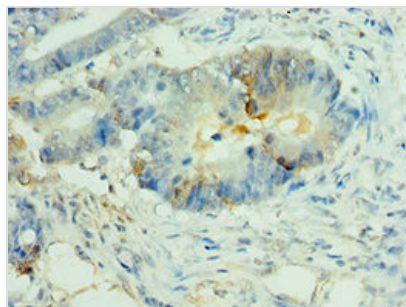
All lanes: NLRP2 antibody at 12µg/ml + A431 whole cell lysate

Secondary

Goat polyclonal to rabbit IgG at 1/10000 dilution

Predicted band size: 121, 119, 97, 118 kDa

Observed band size: 121 kDa



Immunohistochemistry of paraffin-embedded human colon cancer using CSB-PA865163ESR1HU at dilution of 1:100

---

**Usage**

For Research Use Only. Not for use in diagnostic or therapeutic procedures.