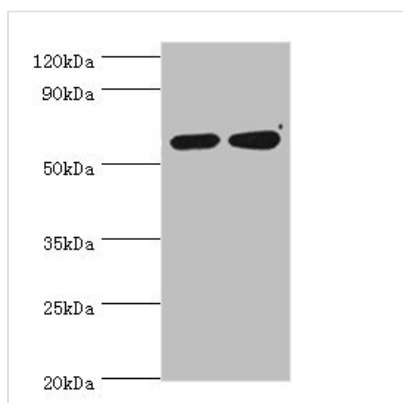




# P4HA2 Antibody

<b>Product Code</b>	CSB-PA017340ESR1HU
<b>Storage</b>	Upon receipt, store at -20°C or -80°C. Avoid repeated freeze.
<b>Uniprot No.</b>	O15460
<b>Immunogen</b>	Recombinant Human Prolyl 4-hydroxylase subunit alpha-2 protein (236-535AA)
<b>Raised In</b>	Rabbit
<b>Species Reactivity</b>	Human
<b>Tested Applications</b>	ELISA, WB, IHC, IP; Recommended dilution: WB:1:1000-1:5000, IHC:1:20-1:200, IP:1:200-1:2000
<b>Form</b>	Liquid
<b>Conjugate</b>	Non-conjugated
<b>Storage Buffer</b>	PBS with 0.02% sodium azide, 50% glycerol, pH7.3.
<b>Purification Method</b>	Antigen Affinity Purified
<b>Isotype</b>	IgG
<b>Clonality</b>	Polyclonal
<b>Alias</b>	Prolyl 4-hydroxylase subunit alpha-2 (4-PH alpha-2) (EC 1.14.11.2) (Procollagen-proline,2-oxoglutarate-4-dioxygenase subunit alpha-2), P4HA2
<b>Immunogen Species</b>	Homo sapiens (Human)
<b>Research Area</b>	Signal Transduction
<b>Target Names</b>	P4HA2

## Image



### Western blot

All lanes: P4HA2 antibody at 6µg/ml

Lane 1: HepG2 whole cell lysate

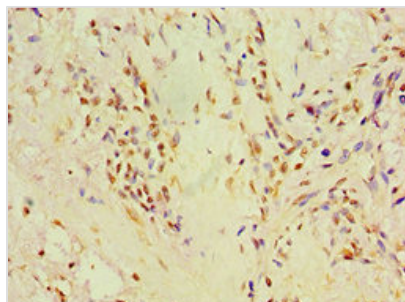
Lane 2: 293T whole cell lysate

Secondary

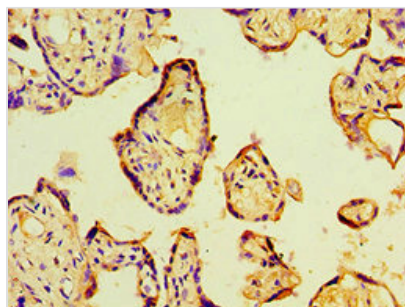
Goat polyclonal to rabbit IgG at 1/10000 dilution

Predicted band size: 61 kDa

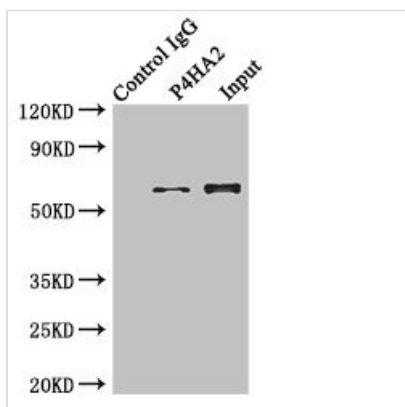
Observed band size: 61 kDa



Immunohistochemistry of paraffin-embedded human breast cancer using CSB-PA017340ESR1HU at dilution of 1:100



Immunohistochemistry of paraffin-embedded human placenta tissue using CSB-PA017340ESR1HU at dilution of 1:100



Immunoprecipitating P4HA2 in HeLa whole cell lysate

Lane 1: Rabbit control IgG instead of (1µg) instead of CSB-PA017340ESR1HU in HeLa whole cell lysate. For western blotting, a HRP-conjugated anti-rabbit IgG, specific to the non-reduced form of IgG was used as the Secondary antibody (1/50000)

Lane 2: CSB-PA017340ESR1HU (4µg) + HeLa whole cell lysate (500µg)

Lane 3: HeLa whole cell lysate (20µg)

**Usage**

For Research Use Only. Not for use in diagnostic or therapeutic procedures.