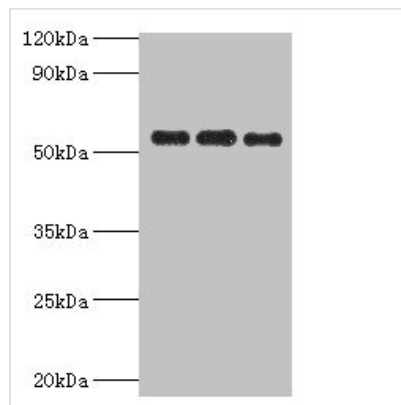




# PDHX Antibody

<b>Product Code</b>	CSB-PA017718ESR2HU
<b>Storage</b>	Upon receipt, store at -20°C or -80°C. Avoid repeated freeze.
<b>Uniprot No.</b>	O00330
<b>Immunogen</b>	Recombinant Human Pyruvate dehydrogenase protein X component, mitochondrial protein (1-300AA)
<b>Raised In</b>	Rabbit
<b>Species Reactivity</b>	Human
<b>Tested Applications</b>	ELISA, WB, IHC; Recommended dilution: WB:1:500-1:5000, IHC:1:20-1:200
<b>Form</b>	Liquid
<b>Conjugate</b>	Non-conjugated
<b>Storage Buffer</b>	PBS with 0.02% sodium azide, 50% glycerol, pH7.3.
<b>Purification Method</b>	Antigen Affinity Purified
<b>Isotype</b>	IgG
<b>Clonality</b>	Polyclonal
<b>Alias</b>	Pyruvate dehydrogenase protein X component, mitochondrial (Dihydrolipoamide dehydrogenase-binding protein of pyruvate dehydrogenase complex) (E3-binding protein) (E3BP) (Lipoyl-containing pyruvate dehydrogenase complex component X) (proX), PDHX, PDX1
<b>Immunogen Species</b>	Homo sapiens (Human)
<b>Research Area</b>	Signal Transduction
<b>Target Names</b>	PDHX

## Image



### Western blot

All lanes: PDHX antibody at 6µg/ml

Lane 1: 293T whole cell lysate

Lane 2: PC-3 whole cell lysate

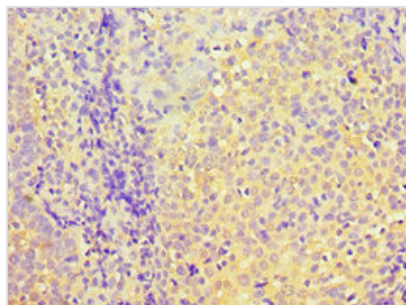
Lane 3: MCF-7 whole cell lysate

Secondary

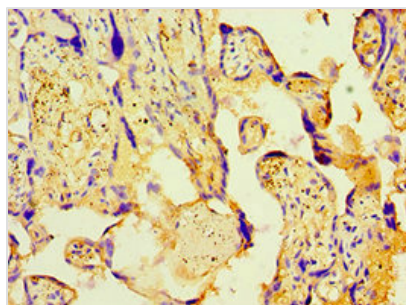
Goat polyclonal to rabbit IgG at 1/10000 dilution

Predicted band size: 55, 30, 52 kDa

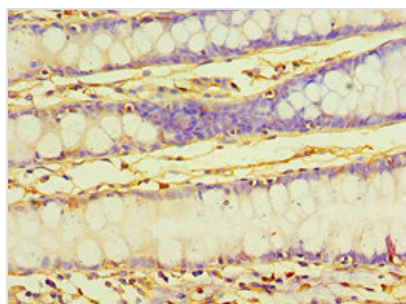
Observed band size: 55 kDa



Immunohistochemistry of paraffin-embedded human tonsil tissue using CSB-PA017718ESR2HU at dilution of 1:100



Immunohistochemistry of paraffin-embedded human placenta tissue using CSB-PA017718ESR2HU at dilution of 1:100



Immunohistochemistry of paraffin-embedded human colon tissue using CSB-PA017718ESR2HU at dilution of 1:100

## Usage

For Research Use Only. Not for use in diagnostic or therapeutic procedures.