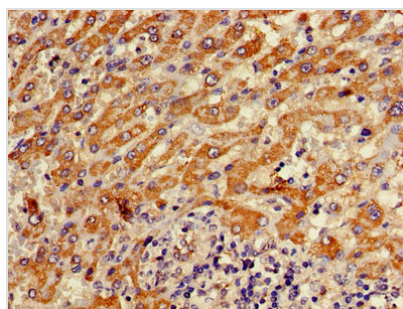




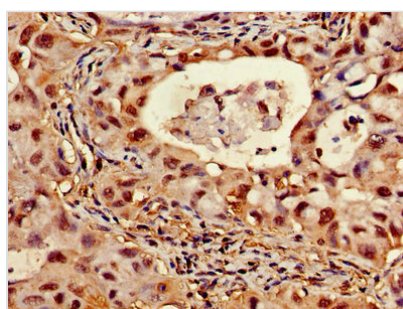
ATP5F1D Antibody

Product Code	CSB-PA002355HA01HU
Storage	Upon receipt, store at -20°C or -80°C. Avoid repeated freeze.
Uniprot No.	P30049
Immunogen	Recombinant Human ATP synthase subunit delta, mitochondrial protein (23-168AA)
Raised In	Rabbit
Species Reactivity	Human
Tested Applications	ELISA, IHC, IF; Recommended dilution: IHC:1:20-1:200, IF:1:50-1:200
Form	Liquid
Conjugate	Non-conjugated
Storage Buffer	Preservative: 0.03% Proclin 300 Constituents: 50% Glycerol, 0.01M PBS, PH 7.4
Purification Method	>95%, Protein G purified
Isotype	IgG
Clonality	Polyclonal
Alias	ATP synthase subunit delta, mitochondrial (ATP synthase F1 subunit delta) (F-ATPase delta subunit), ATP5F1D, ATP5D
Immunogen Species	Homo sapiens (Human)
Research Area	Tags & Cell Markers
Target Names	ATP5F1D

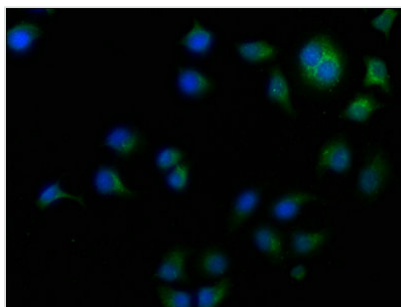
Image



Immunohistochemistry of paraffin-embedded human liver cancer using CSB-PA002355HA01HU at dilution of 1:100



Immunohistochemistry of paraffin-embedded human lung cancer using CSB-PA002355HA01HU at dilution of 1:100



Immunofluorescence staining of A549 cells with CSB-PA002355HA01HU at 1:66, counter-stained with DAPI. The cells were fixed in 4% formaldehyde, permeabilized using 0.2% Triton X-100 and blocked in 10% normal Goat Serum. The cells were then incubated with the antibody overnight at 4°C. The secondary antibody was Alexa Fluor 488-conjugated AffiniPure Goat Anti-Rabbit IgG(H+L).