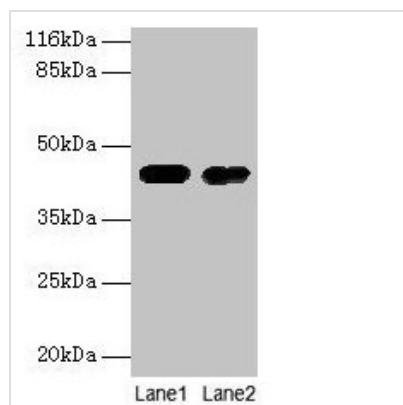




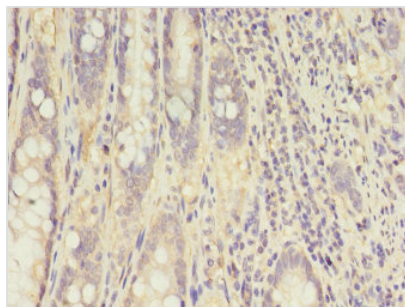
CKB Antibody

Product Code	CSB-PA01495A0Rb
Storage	Upon receipt, store at -20°C or -80°C. Avoid repeated freeze.
Uniprot No.	P12277
Immunogen	Recombinant Human Creatine kinase B-type protein (2-270AA)
Raised In	Rabbit
Species Reactivity	Human, Mouse
Tested Applications	ELISA, WB, IHC, IF; Recommended dilution: WB:1:500-1:5000, IHC:1:20-1:200, IF:1:50-1:200
Form	Liquid
Conjugate	Non-conjugated
Storage Buffer	Preservative: 0.03% Proclin 300 Constituents: 50% Glycerol, 0.01M PBS, PH 7.4
Purification Method	>95%, Protein G purified
Isotype	IgG
Clonality	Polyclonal
Alias	Creatine kinase B-type (EC 2.7.3.2) (Brain creatine kinase) (B-CK) (Creatine kinase B chain) (Creatine phosphokinase B-type) (CPK-B), CKB, CKBB
Immunogen Species	Homo sapiens (Human)
Research Area	Neuroscience
Target Names	CKB

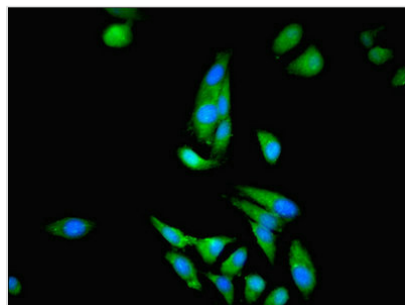
Image



Western blot
All lanes: CKB antibody at 2µg/ml
Lane 1: Mouse brain tissue
Lane 2: 293T whole cell lysate
Secondary
Goat polyclonal to rabbit IgG at 1/10000 dilution
Predicted band size: 43 kDa
Observed band size: 43 kDa



Immunohistochemistry of paraffin-embedded human colon cancer using CSB-PA01495A0Rb at dilution of 1:100



Immunofluorescent analysis of Hela cells using CSB-PA01495A0Rb at dilution of 1:100 and Alexa Fluor 488-conjugated AffiniPure Goat Anti-Rabbit IgG(H+L)