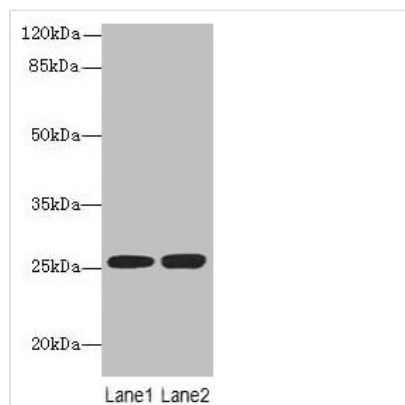




EEF1AKMT1 Antibody

Product Code	CSB-PA819896HA01HU
Storage	Upon receipt, store at -20°C or -80°C. Avoid repeated freeze.
Uniprot No.	Q8WVE0
Immunogen	Recombinant Human EEF1A lysine methyltransferase 1 protein (2-214AA)
Raised In	Rabbit
Species Reactivity	Human
Tested Applications	ELISA, WB; Recommended dilution: WB:1:1000-1:5000
Form	Liquid
Conjugate	Non-conjugated
Storage Buffer	Preservative: 0.03% Proclin 300 Constituents: 50% Glycerol, 0.01M PBS, PH 7.4
Purification Method	>95%, Protein G purified
Isotype	IgG
Clonality	Polyclonal
Alias	EEF1A lysine methyltransferase 1 (EC 2.1.1.-) (N(6)-adenine-specific DNA methyltransferase 2) (Protein-lysine N-methyltransferase N6AMT2), EEF1AKMT1, N6AMT2
Immunogen Species	Homo sapiens (Human)
Research Area	Epigenetics and Nuclear Signaling

Image



Western blot

All lanes: EEF1AKMT1 antibody at 10µg/ml

Lane 1: Jurkat whole cell lysate

Lane 2: 293T whole cell lysate

Secondary

Goat polyclonal to rabbit IgG at 1/10000 dilution

Predicted band size: 25 kDa

Observed band size: 25 kDa