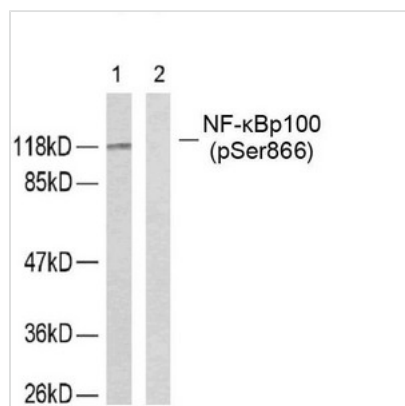




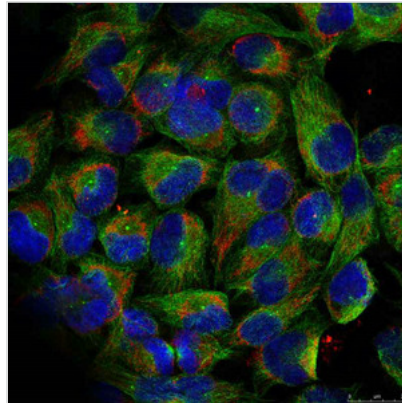
Phospho-NFkB2 (Ser866) Antibody

Product Code	CSB-PA156096
Storage	Upon receipt, store at -20°C or -80°C. Avoid repeated freeze.
Uniprot No.	Q00653
Immunogen	Peptide sequence around phosphorylation site of serine 866(E-D-S(p)-A-Y) derived from Human NFκB-p100.
Raised In	Rabbit
Species Reactivity	Human,Mouse,Rat
Specificity	The antibody detects endogenous level of NFκB-p100 only when phosphorylated at serine 866.
Tested Applications	ELISA,WB,IHC,IF;WB:1:500-1:1000,IHC:1:50-1:100,IF:1:100-1:200
Form	Supplied at 1.0mg/mL in phosphate buffered saline (without Mg2+ and Ca2+), pH 7.4, 150mM NaCl, 0.02% sodium azide and 50% glycerol.
Purification Method	Antibodies were produced by immunizing rabbits with synthetic phosphopeptide and KLH conjugates. Antibodies were purified by affinity-chromatography using epitope-specific phosphopeptide. Non-phospho specific antibodies were removed by chromatography using
Clonality	Polyclonal
Alias	p52; p105; H2TF1; LYT10; NF-κB2
Product Type	Polyclonal Antibody
Immunogen Species	Homo sapiens (Human)
Target Names	NFkB2

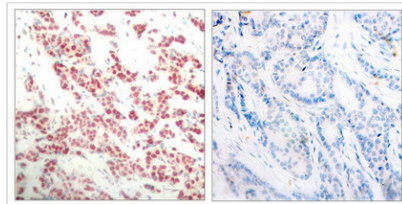
Image



Western blot analysis of extracts from ovary cancer cells using NF-κB p100 (phospho-Ser866) antibody.



Immunofluorescence staining of methanol-fixed HeLa cells using NF-kappa;B p100 (phospho-ser866) antibody.



Immunohistochemical analysis of paraffin-embedded human breast carcinoma tissue using NF- κ B p100 (phospho-ser866) antibody.

Product Modify

Phospho-Ser866