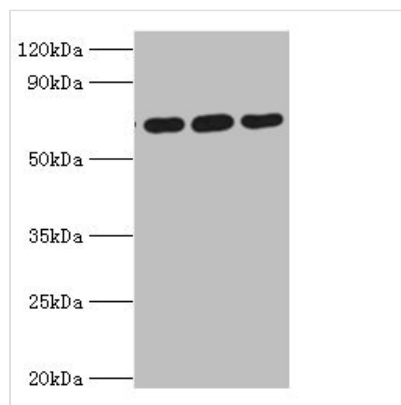




ATAD3A Antibody

Product Code	CSB-PA878897ESR2HU
Storage	Upon receipt, store at -20°C or -80°C. Avoid repeated freeze.
Uniprot No.	Q9NVI7
Immunogen	Synthesized peptide derived from human ATD3A
Raised In	Rabbit
Species Reactivity	Human, Mouse
Tested Applications	ELISA, WB; Recommended dilution: WB:1:500-1:5000
Form	Liquid
Conjugate	Non-conjugated
Storage Buffer	Liquid in PBS containing 50% glycerol, 0.5% BSA and 0.02% sodium azide
Purification Method	Antigen Affinity Purified
Isotype	IgG
Clonality	Polyclonal
Product Type	Polyclonal Antibody
Immunogen Species	Homo sapiens (Human)
Research Area	Cell Biology
Target Names	ATAD3A

Image



Western Blot

Positive WB detected in: HeLa whole cell lysate(30µg), HepG2 whole cell lysate(30µg), HT29 whole cell lysate(30µg), BxPC-3 whole cell lysate(30µg), THP-1 whole cell lysate(20µg), Mouse Liver tissue lysate(20µg)

All lanes: ATAD3A antibody at 1:1000

Secondary
Goat polyclonal to rabbit IgG at 1/40000 dilution

Predicted band size: 72,67,58 kDa
Observed band size: 72 kDa
Exposure time: 120s

Usage

For Research Use Only. Not for use in diagnostic or therapeutic procedures.