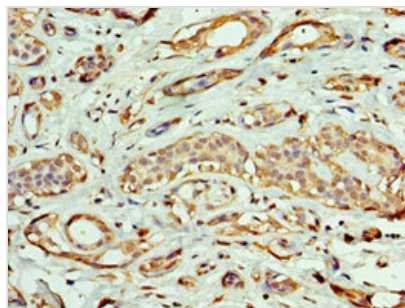




EXOG Antibody

Product Code	CSB-PA007666ESR2HU
Storage	Upon receipt, store at -20°C or -80°C. Avoid repeated freeze.
Uniprot No.	Q9Y2C4
Immunogen	Recombinant Human Nuclease EXOG, mitochondrial protein (144-368AA)
Raised In	Rabbit
Species Reactivity	Human
Tested Applications	ELISA, IHC; Recommended dilution: IHC:1:20-1:200
Form	Liquid
Conjugate	Non-conjugated
Storage Buffer	PBS with 0.02% sodium azide, 50% glycerol, pH7.3.
Purification Method	Antigen Affinity Purified
Isotype	IgG
Clonality	Polyclonal
Alias	Nuclease EXOG, mitochondrial (EC 3.1.30.-) (Endonuclease G-like 1) (Endo G-like 1), EXOG, ENDOGL1 ENDOGL2 ENGL
Immunogen Species	Homo sapiens (Human)
Research Area	Tags & Cell Markers
Target Names	EXOG

Image



Immunohistochemistry of paraffin-embedded human breast cancer using CSB-PA007666ESR2HU at dilution of 1:100

Usage

For Research Use Only. Not for use in diagnostic or therapeutic procedures.