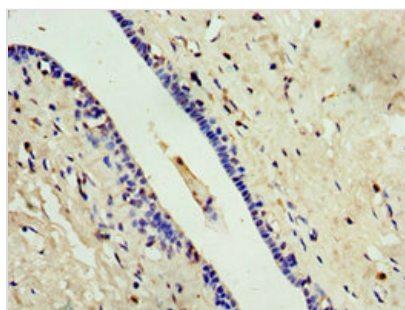




# ALG1 Antibody

<b>Product Code</b>	CSB-PA887118ESR2HU
<b>Storage</b>	Upon receipt, store at -20°C or -80°C. Avoid repeated freeze.
<b>Uniprot No.</b>	Q9BT22
<b>Immunogen</b>	Recombinant Human Chitobiosyldiphosphodolichol beta-mannosyltransferase protein (215-464AA)
<b>Raised In</b>	Rabbit
<b>Species Reactivity</b>	Human
<b>Tested Applications</b>	ELISA, IHC; Recommended dilution: IHC:1:20-1:200
<b>Form</b>	Liquid
<b>Conjugate</b>	Non-conjugated
<b>Storage Buffer</b>	PBS with 0.02% sodium azide, 50% glycerol, pH7.3.
<b>Purification Method</b>	Antigen Affinity Purified
<b>Isotype</b>	IgG
<b>Clonality</b>	Polyclonal
<b>Alias</b>	Chitobiosyldiphosphodolichol beta-mannosyltransferase (EC 2.4.1.142) (Asparagine-linked glycosylation protein 1 homolog) (Beta-1,4-mannosyltransferase) (GDP-Man:GlcNAc2-PP-dolichol mannosyltransferase) (GDP-mannose-dolichol diphosphochitobiose mannosyltransferase) (Mannosyltransferase-1) (MT-1) (hMat-1), ALG1, HMAT1 HMT1
<b>Immunogen Species</b>	Homo sapiens (Human)
<b>Research Area</b>	Signal Transduction
<b>Target Names</b>	ALG1

## Image



Immunohistochemistry of paraffin-embedded human breast cancer using CSB-PA887118ESR2HU at dilution of 1:100

**Usage** For Research Use Only. Not for use in diagnostic or therapeutic procedures.