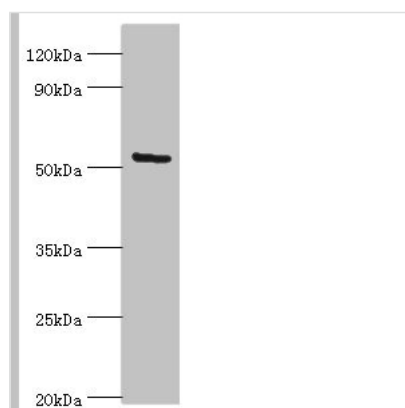




ALG1 Antibody

Product Code	CSB-PA887118ESR1HU
Storage	Upon receipt, store at -20°C or -80°C. Avoid repeated freeze.
Uniprot No.	Q9BT22
Immunogen	Recombinant Human Chitobiosyldiphosphodolichol beta-mannosyltransferase protein (215-464AA)
Raised In	Rabbit
Species Reactivity	Human
Tested Applications	ELISA, WB, IHC; Recommended dilution: WB:1:500-1:2000, IHC:1:20-1:200
Form	Liquid
Conjugate	Non-conjugated
Storage Buffer	PBS with 0.02% sodium azide, 50% glycerol, pH7.3.
Purification Method	Antigen Affinity Purified
Isotype	IgG
Clonality	Polyclonal
Alias	Chitobiosyldiphosphodolichol beta-mannosyltransferase (EC 2.4.1.142) (Asparagine-linked glycosylation protein 1 homolog) (Beta-1,4-mannosyltransferase) (GDP-Man:GlcNAc2-PP-dolichol mannosyltransferase) (GDP-mannose-dolichol diphosphochitobiose mannosyltransferase) (Mannosyltransferase-1) (MT-1) (hMat-1), ALG1, HMAT1 HMT1
Immunogen Species	Homo sapiens (Human)
Research Area	Signal Transduction
Target Names	ALG1

Image



Western blot

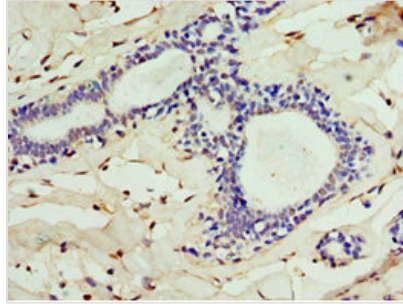
All lanes: ALG1 antibody at 10µg/ml + HeLa whole cell lysate

Secondary

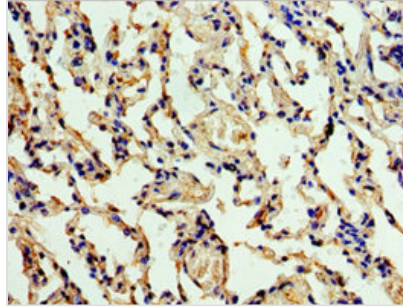
Goat polyclonal to rabbit IgG at 1/10000 dilution

Predicted band size: 53, 41 kDa

Observed band size: 53 kDa



Immunohistochemistry of paraffin-embedded human breast cancer using CSB-PA887118ESR1HU at dilution of 1:100



Immunohistochemistry of paraffin-embedded human lung tissue using CSB-PA887118ESR1HU at dilution of 1:100

Usage

For Research Use Only. Not for use in diagnostic or therapeutic procedures.