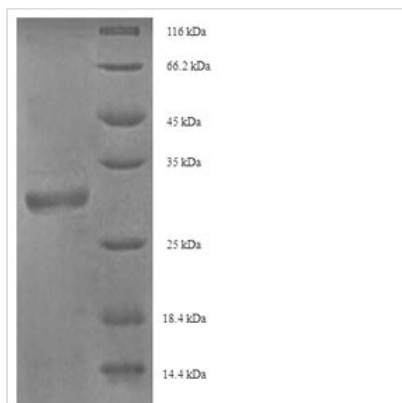




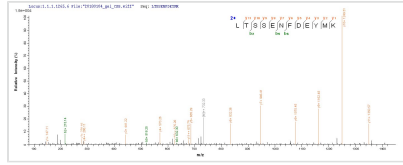
Recombinant Horse Myelin P2 protein (PMP2)

Product Code	CSB-EP315130HO
Relevance	May play a role in lipid transport protein in Schwann cells. May bind cholesterol.
Abbreviation	Recombinant Horse PMP2 protein
Storage	The shelf life is related to many factors, storage state, buffer ingredients, storage temperature and the stability of the protein itself. Generally, the shelf life of liquid form is 6 months at -20°C/-80°C. The shelf life of lyophilized form is 12 months at -20°C/-80°C.
Uniprot No.	P0C6G6
Product Type	Recombinant Protein
Immunogen Species	Equus caballus (Horse)
Purity	≥ 90% as determined by SDS-PAGE.
Sequence	SNKFLGTWKLTSSENFDEYMKALGVGLGTRSLGNLAGPTVIISKSGDVITIRTE SGFKNTEISFKLGQFEETTADNRKTKSTVTLAGGKLNQVQKWNGNETTIKRE LVDGKMVVECSMASVVCTRIYEQV
Research Area	Others
Source	E.coli
Target Names	PMP2
Expression Region	2-132aa
Notes	Repeated freezing and thawing is not recommended. Store working aliquots at 4°C for up to one week.
Tag Info	N-terminal 6xHis-SUMO-tagged
Mol. Weight	30.4kDa
Protein Length	Full Length of Mature Protein

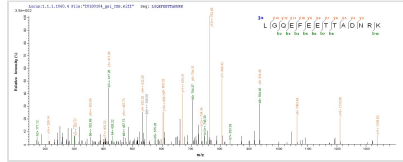
Image



(Tris-Glycine gel) Discontinuous SDS-PAGE (reduced) with 5% enrichment gel and 15% separation gel.



Based on the SEQUEST from database of E.coli host and target protein, the LC-MS/MS Analysis result of CSB-EP315130HO could indicate that this peptide derived from E.coli-expressed Equus caballus (Horse) PMP2.



Based on the SEQUEST from database of E.coli host and target protein, the LC-MS/MS Analysis result of CSB-EP315130HO could indicate that this peptide derived from E.coli-expressed Equus caballus (Horse) PMP2.

Reconstitution

We recommend that this vial be briefly centrifuged prior to opening to bring the contents to the bottom. Please reconstitute protein in deionized sterile water to a concentration of 0.1-1.0 mg/mL. We recommend to add 5-50% of glycerol (final concentration) and aliquot for long-term storage at -20°C/-80°C. Our default final concentration of glycerol is 50%. Customers could use it as reference.

Shelf Life

The shelf life is related to many factors, storage state, buffer ingredients, storage temperature and the stability of the protein itself. Generally, the shelf life of liquid form is 6 months at -20°C/-80°C. The shelf life of lyophilized form is 12 months at -20°C/-80°C.