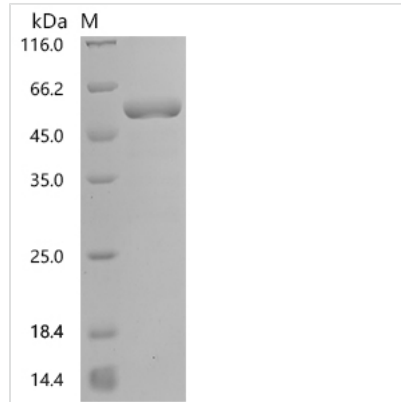




Recombinant Escherichia coli Signal peptidase I (lepB), partial

Product Code	CSB-EP360447ENV
Relevance	Cleavage of hydrophobic, N-terminal signal or leader sequences from secreted and periplasmic proteins.
Abbreviation	Recombinant E.coli lepB protein, partial
Storage	The shelf life is related to many factors, storage state, buffer ingredients, storage temperature and the stability of the protein itself. Generally, the shelf life of liquid form is 6 months at -20°C/-80°C. The shelf life of lyophilized form is 12 months at -20°C/-80°C.
Uniprot No.	P00803
Alias	Leader peptidase I
Product Type	Recombinant Protein
Immunogen Species	Escherichia coli (strain K12)
Purity	≥ 90% as determined by SDS-PAGE.
Sequence	RSFIYEPFQIPSGSMMPTLLIGDFILVEKFAYGIKDPIYQKTLIETGHPKRGDIVVF KYPEDPKLDYIKRAVGLPGDKVITYDPVSKELTIQPGCSSGQACENALPVTYSN VEPSDFVQTFRRNGGEATSGFFEVPKNETKENGIRLSERKETLGDVTHRILT VPIAQDQVGMYYQQPGQQLATWIVPPGQYFMMGDNRDNSADSRYWGFVPE ANLVGRATAIWMSFDKQEGEWPTGLRLSRIGGIH
Research Area	Microbiology
Source	E.coli
Target Names	lepB
Expression Region	78-324aa
Notes	Repeated freezing and thawing is not recommended. Store working aliquots at 4°C for up to one week.
Tag Info	N-terminal 6xHis-SUMO-tagged
Mol. Weight	43.7kDa
Protein Length	Partial
Image	



(Tris-Glycine gel) Discontinuous SDS-PAGE (reduced) with 5% enrichment gel and 15% separation gel.

Reconstitution

We recommend that this vial be briefly centrifuged prior to opening to bring the contents to the bottom. Please reconstitute protein in deionized sterile water to a concentration of 0.1-1.0 mg/mL. We recommend to add 5-50% of glycerol (final concentration) and aliquot for long-term storage at -20°C/-80°C. Our default final concentration of glycerol is 50%. Customers could use it as reference.

Shelf Life

The shelf life is related to many factors, storage state, buffer ingredients, storage temperature and the stability of the protein itself. Generally, the shelf life of liquid form is 6 months at -20°C/-80°C. The shelf life of lyophilized form is 12 months at -20°C/-80°C.