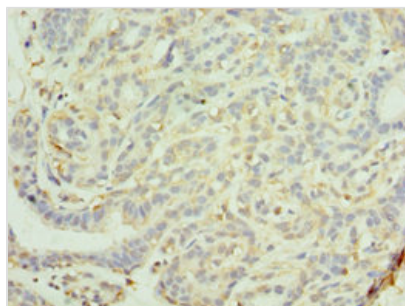




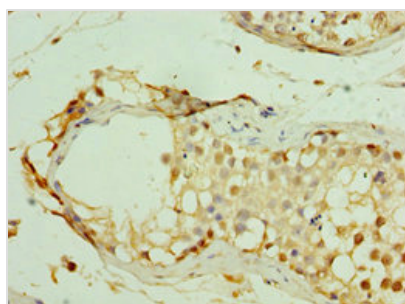
MAGEC2 Antibody

Product Code	CSB-PA887003DSR2HU
Storage	Upon receipt, store at -20°C or -80°C. Avoid repeated freeze.
Uniprot No.	Q9UBF1
Immunogen	Recombinant Human Melanoma-associated antigen C2 protein (1-150AA)
Raised In	Rabbit
Species Reactivity	Human
Tested Applications	ELISA, IHC; Recommended dilution: IHC:1:20-1:200
Form	Liquid
Conjugate	Non-conjugated
Storage Buffer	PBS with 0.02% sodium azide, 50% glycerol, pH7.3.
Purification Method	Antigen Affinity Purified
Isotype	IgG
Clonality	Polyclonal
Alias	Melanoma-associated antigen C2 (Cancer/testis antigen 10) (CT10) (Hepatocellular carcinoma-associated antigen 587) (MAGE-C2 antigen) (MAGE-E1 antigen), MAGEC2, HCA587 MAGEE1
Immunogen Species	Homo sapiens (Human)
Research Area	Cancer
Target Names	MAGEC2

Image



Immunohistochemistry of paraffin-embedded human breast cancer using CSB-PA887003DSR2HU at dilution of 1:100



Immunohistochemistry of paraffin-embedded human testis tissue using CSB-PA887003DSR2HU at dilution of 1:100



Usage

For Research Use Only. Not for use in diagnostic or therapeutic procedures.