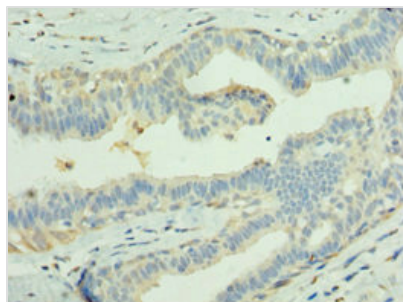




LGI1 Antibody

Product Code	CSB-PA012898ESR2HU
Storage	Upon receipt, store at -20°C or -80°C. Avoid repeated freeze.
Uniprot No.	O95970
Immunogen	Recombinant Human Leucine-rich glioma-inactivated protein 1 protein (35-285AA)
Raised In	Rabbit
Species Reactivity	Human
Tested Applications	ELISA, IHC; Recommended dilution: IHC:1:20-1:200
Form	Liquid
Conjugate	Non-conjugated
Storage Buffer	PBS with 0.02% sodium azide, 50% glycerol, pH7.3.
Purification Method	Antigen Affinity Purified
Isotype	IgG
Clonality	Polyclonal
Alias	Leucine-rich glioma-inactivated protein 1 (Epitempin-1), LGI1, EPT
Immunogen Species	Homo sapiens (Human)
Research Area	Neuroscience
Target Names	LGI1

Image



Immunohistochemistry of paraffin-embedded human breast cancer using CSB-PA012898ESR2HU at dilution of 1: 100

Usage For Research Use Only. Not for use in diagnostic or therapeutic procedures.