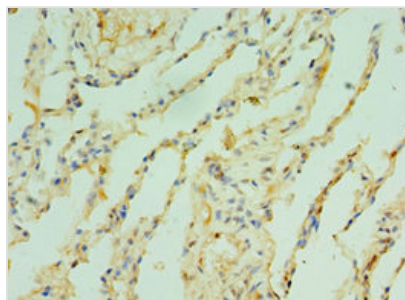




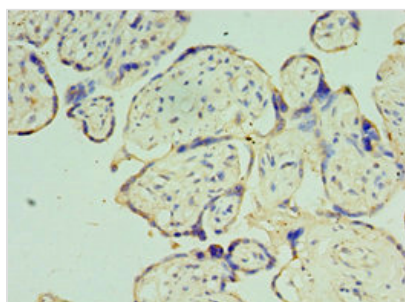
TOMM40 Antibody

Product Code	CSB-PA024050ESR1HU
Storage	Upon receipt, store at -20°C or -80°C. Avoid repeated freeze.
Uniprot No.	O96008
Immunogen	Recombinant Human Mitochondrial import receptor subunit TOM40 homolog protein (1-361AA)
Raised In	Rabbit
Species Reactivity	Human
Tested Applications	ELISA, IHC; Recommended dilution: IHC:1:20-1:200
Form	Liquid
Conjugate	Non-conjugated
Storage Buffer	PBS with 0.02% sodium azide, 50% glycerol, pH7.3.
Purification Method	Antigen Affinity Purified
Isotype	IgG
Clonality	Polyclonal
Alias	Mitochondrial import receptor subunit TOM40 homolog (Protein Haymaker) (Translocase of outer membrane 40 kDa subunit homolog) (p38.5), TOMM40, C19orf1 PEREC1 TOM40
Immunogen Species	Homo sapiens (Human)
Research Area	Tags & Cell Markers
Target Names	TOMM40

Image



Immunohistochemistry of paraffin-embedded human lung tissue using CSB-PA024050ESR1HU at dilution of 1:100



Immunohistochemistry of paraffin-embedded human placenta tissue using CSB-PA024050ESR1HU at dilution of 1:100



Usage

For Research Use Only. Not for use in diagnostic or therapeutic procedures.