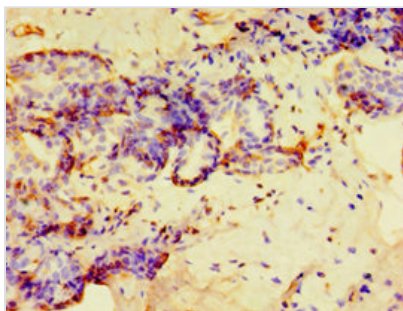




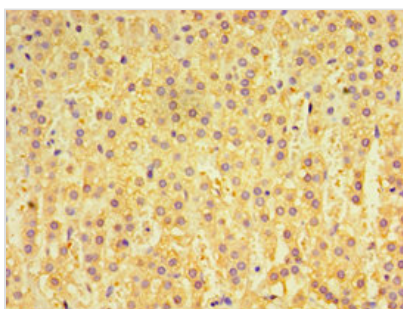
GPS1 Antibody

Product Code	CSB-PA615663ESR2HU
Storage	Upon receipt, store at -20°C or -80°C. Avoid repeated freeze.
Uniprot No.	Q13098
Immunogen	Recombinant Human COP9 signalosome complex subunit 1 protein (222-491AA)
Raised In	Rabbit
Species Reactivity	Human
Tested Applications	ELISA, IHC; Recommended dilution: IHC:1:20-1:200
Form	Liquid
Conjugate	Non-conjugated
Storage Buffer	PBS with 0.02% sodium azide, 50% glycerol, pH7.3.
Purification Method	Antigen Affinity Purified
Isotype	IgG
Clonality	Polyclonal
Alias	COP9 signalosome complex subunit 1 (SGN1) (Signalosome subunit 1) (G protein pathway suppressor 1) (GPS-1) (JAB1-containing signalosome subunit 1) (Protein MFH), GPS1, COPS1 CSN1
Immunogen Species	Homo sapiens (Human)
Research Area	Neuroscience
Target Names	GPS1

Image



Immunohistochemistry of paraffin-embedded human breast cancer using CSB-PA615663ESR2HU at dilution of 1:100



Immunohistochemistry of paraffin-embedded human adrenal gland tissue using CSB-PA615663ESR2HU at dilution of 1:100



Usage

For Research Use Only. Not for use in diagnostic or therapeutic procedures.