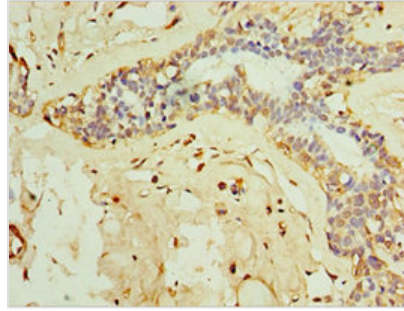


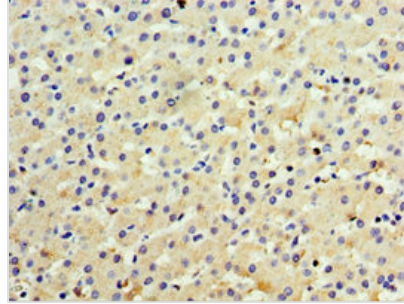


IFNL3 Antibody

Product Code	CSB-PA810313ESR1HU
Storage	Upon receipt, store at -20°C or -80°C. Avoid repeated freeze.
Uniprot No.	Q8IZI9
Immunogen	Recombinant Human Interferon lambda-3 protein (22-196AA)
Raised In	Rabbit
Species Reactivity	Human
Tested Applications	ELISA, IHC; Recommended dilution: IHC:1:20-1:200
Relevance	<p>Cytokine with antiviral, antitumour and immunomodulatory activities. Plays a critical role in the antiviral host defense, predominantly in the epithelial tissues. Acts as a ligand for the heterodimeric class II cytokine receptor composed of IL10RB and IFNLR1, and receptor engagement leads to the activation of the JAK/STAT signaling pathway resulting in the expression of IFN-stimulated genes (ISG), which mediate the antiviral state. Has a restricted receptor distribution and therefore restricted targets: is primarily active in epithelial cells and this cell type-selective action is because of the epithelial cell-specific expression of its receptor IFNLR1. Seems not to be essential for early virus-activated host defense in vaginal infection, but plays an important role in Toll-like receptor (TLR)-induced antiviral defense. Plays a significant role in the antiviral immune defense in the intestinal epithelium. Exerts an immunomodulatory effect by up-regulating MHC class I antigen expression.</p>
Form	Liquid
Conjugate	Non-conjugated
Storage Buffer	PBS with 0.02% sodium azide, 50% glycerol, pH7.3.
Purification Method	Antigen Affinity Purified
Isotype	IgG
Clonality	Polyclonal
Alias	Interferon lambda-3 (IFN-lambda-3) (Cytokine Zcyto22) (Interleukin-28B) (IL-28B) (Interleukin-28C) (IL-28C), IFNL3, IL28B IL28C ZCYTO22
Immunogen Species	Homo sapiens (Human)
Research Area	Immunology
Target Names	IFNL3
Image	



Immunohistochemistry of paraffin-embedded human breast cancer using CSB-PA810313ESR1HU at dilution of 1:100



Immunohistochemistry of paraffin-embedded human liver cancer using CSB-PA810313ESR1HU at dilution of 1:100