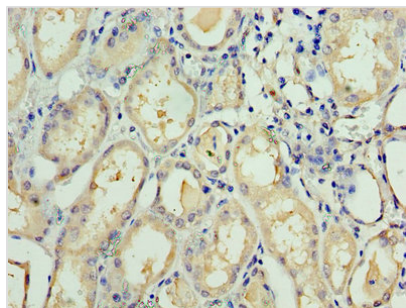




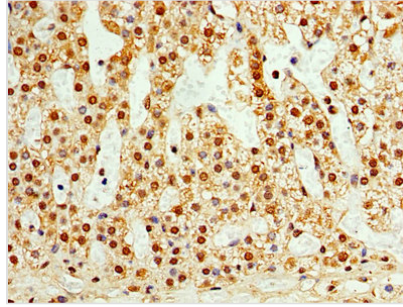
TAF1C Antibody

Product Code	CSB-PA620884ESR2HU
Storage	Upon receipt, store at -20°C or -80°C. Avoid repeated freeze.
Uniprot No.	Q15572
Immunogen	Recombinant Human TATA box-binding protein-associated factor RNA polymerase I subunit C protein (70-320AA)
Raised In	Rabbit
Species Reactivity	Human
Tested Applications	ELISA, IHC, IF; Recommended dilution: IHC:1:20-1:200, IF:1:50-1:200
Form	Liquid
Conjugate	Non-conjugated
Storage Buffer	PBS with 0.02% sodium azide, 50% glycerol, pH7.3.
Purification Method	Antigen Affinity Purified
Isotype	IgG
Clonality	Polyclonal
Alias	TATA box-binding protein-associated factor RNA polymerase I subunit C (RNA polymerase I-specific TBP-associated factor 110 kDa) (TAFI110) (TATA box-binding protein-associated factor 1C) (TBP-associated factor 1C) (Transcription initiation factor SL1/TIF-IB subunit C), TAF1C
Immunogen Species	Homo sapiens (Human)
Research Area	Epigenetics and Nuclear Signaling
Target Names	TAF1C

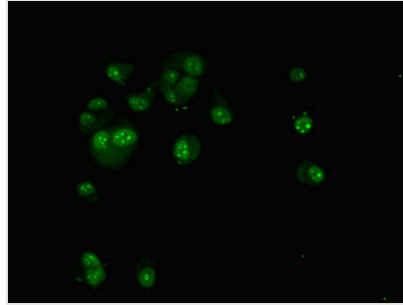
Image



Immunohistochemistry of paraffin-embedded human kidney tissue using CSB-PA620884ESR2HU at dilution of 1:100



Immunohistochemistry of paraffin-embedded human adrenal gland tissue using CSB-PA620884ESR2HU at dilution of 1:100



Immunofluorescent analysis of MCF-7 cells using CSB-PA620884ESR2HU at dilution of 1:100 and Alexa Fluor 488-conjugated AffiniPure Goat Anti-Rabbit IgG(H+L)

Usage

For Research Use Only. Not for use in diagnostic or therapeutic procedures.