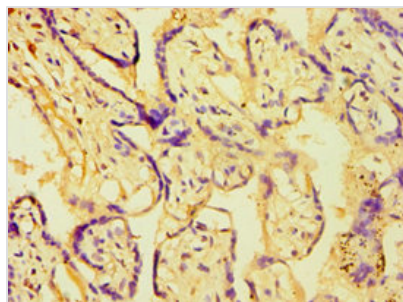




ATPIF1 Antibody

Product Code	CSB-PA883434ESR1HU
Storage	Upon receipt, store at -20°C or -80°C. Avoid repeated freeze.
Uniprot No.	Q9UII2
Immunogen	Recombinant Human ATPase inhibitor, mitochondrial protein (26-106AA)
Raised In	Rabbit
Species Reactivity	Human
Tested Applications	ELISA, IHC; Recommended dilution: IHC:1:20-1:200
Form	Liquid
Conjugate	Non-conjugated
Storage Buffer	PBS with 0.02% sodium azide, 50% glycerol, pH7.3.
Purification Method	Antigen Affinity Purified
Isotype	IgG
Clonality	Polyclonal
Alias	ATPase inhibitor, mitochondrial (Inhibitor of F(1)F(o)-ATPase) (IF(1)) (IF1), ATPIF1, ATPI
Immunogen Species	Homo sapiens (Human)
Research Area	Tags & Cell Markers
Target Names	ATPIF1

Image



Immunohistochemistry of paraffin-embedded human placenta tissue using CSB-PA883434ESR1HU at dilution of 1:100

Usage

For Research Use Only. Not for use in diagnostic or therapeutic procedures.