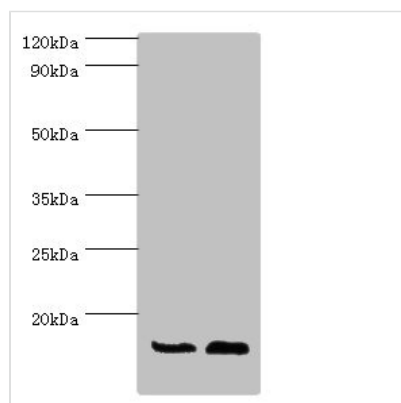




ATP5J Antibody

Product Code	CSB-PA002369ESR1HU
Storage	Upon receipt, store at -20°C or -80°C. Avoid repeated freeze.
Uniprot No.	P18859
Immunogen	Recombinant Human ATP synthase-coupling factor 6, mitochondrial protein (1-108AA)
Raised In	Rabbit
Species Reactivity	Human, Mouse, Rat
Tested Applications	ELISA, WB, IHC; Recommended dilution: WB:1:500-1:5000, IHC:1:20-1:200
Form	Liquid
Conjugate	Non-conjugated
Storage Buffer	PBS with 0.02% sodium azide, 50% glycerol, pH7.3.
Purification Method	Antigen Affinity Purified
Isotype	IgG
Clonality	Polyclonal
Alias	ATP synthase-coupling factor 6, mitochondrial (ATPase subunit F6), ATP5J, ATP5A ATPM
Immunogen Species	Homo sapiens (Human)
Research Area	Tags & Cell Markers
Target Names	ATP5J

Image



Western blot

All lanes: ATP5J antibody at 7µg/ml

Lane 1: Rat brain tissue

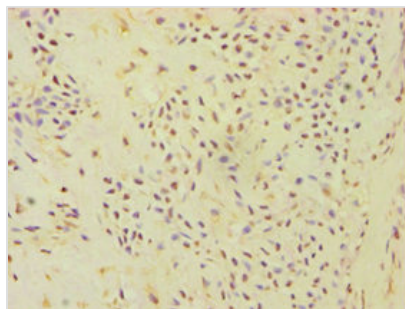
Lane 2: Mouse heart tissue

Secondary

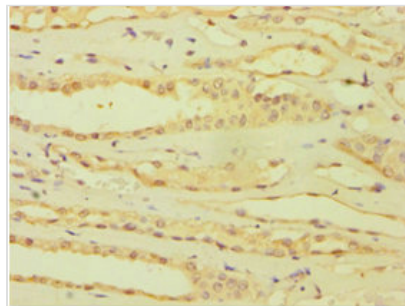
Goat polyclonal to rabbit IgG at 1/10000 dilution

Predicted band size: 13, 14 kDa

Observed band size: 13 kDa



Immunohistochemistry of paraffin-embedded human breast cancer using CSB-PA002369ESR1HU at dilution of 1:100



Immunohistochemistry of paraffin-embedded human kidney tissue using CSB-PA002369ESR1HU at dilution of 1:100

Usage

For Research Use Only. Not for use in diagnostic or therapeutic procedures.