



CDK16 Antibody

Product Code	CSB-PA017648ESR2HU
Storage	Upon receipt, store at -20°C or -80°C. Avoid repeated freeze.
Uniprot No.	Q00536
Immunogen	Recombinant Human Cyclin-dependent kinase 16 protein (277-496AA)
Raised In	Rabbit
Species Reactivity	Human, Mouse
Tested Applications	ELISA, WB, IHC; Recommended dilution: WB:1:200-1:1000, IHC:1:20-1:200
Form	Liquid
Conjugate	Non-conjugated
Storage Buffer	PBS with 0.02% sodium azide, 50% glycerol, pH7.3.
Purification Method	Antigen Affinity Purified
Isotype	IgG
Clonality	Polyclonal
Alias	Cyclin-dependent kinase 16 (EC 2.7.11.22) (Cell division protein kinase 16) (PCTAIRE-motif protein kinase 1) (Serine/threonine-protein kinase PCTAIRE-1), CDK16, PCTAIRE1 PCTK1
Immunogen Species	Homo sapiens (Human)
Research Area	Signal Transduction
Target Names	CDK16

Image



Western blot

All lanes: CDK16 antibody at 5µg/ml

Lane 1: Mouse brain tissue

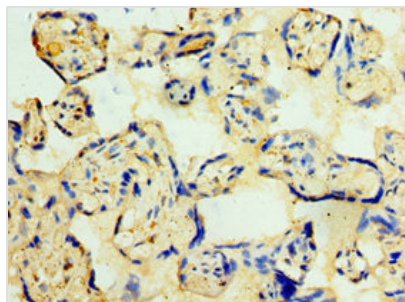
Lane 2: Mouse small intestine tissue

Secondary

Goat polyclonal to rabbit IgG at 1/10000 dilution

Predicted band size: 56, 64, 57 kDa

Observed band size: 56 kDa



Immunohistochemistry of paraffin-embedded human placenta tissue using CSB-PA017648ESR2HU at dilution of 1:100

Usage

For Research Use Only. Not for use in diagnostic or therapeutic procedures.