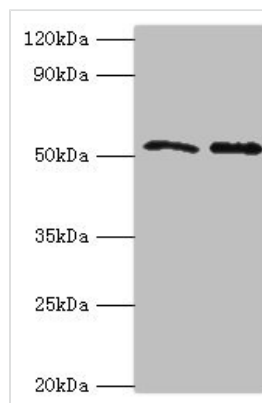




GOPC Antibody

Product Code	CSB-PA862075ESR1HU
Storage	Upon receipt, store at -20°C or -80°C. Avoid repeated freeze.
Uniprot No.	Q9HD26
Immunogen	Recombinant Human Golgi-associated PDZ and coiled-coil motif-containing protein (203-462AA)
Raised In	Rabbit
Species Reactivity	Human
Tested Applications	ELISA, WB, IHC; Recommended dilution: WB:1:500-1:5000, IHC:1:20-1:200
Form	Liquid
Conjugate	Non-conjugated
Storage Buffer	PBS with 0.02% sodium azide, 50% glycerol, pH7.3.
Purification Method	Antigen Affinity Purified
Isotype	IgG
Clonality	Polyclonal
Alias	Golgi-associated PDZ and coiled-coil motif-containing protein (CFTR-associated ligand) (Fused in glioblastoma) (PDZ protein interacting specifically with TC10) (PIST), GOPC, CAL FIG
Immunogen Species	Homo sapiens (Human)
Research Area	Tags & Cell Markers
Target Names	GOPC

Image



Western blot

All lanes: GOPC antibody at 4µg/ml

Lane 1: K562 whole cell lysate

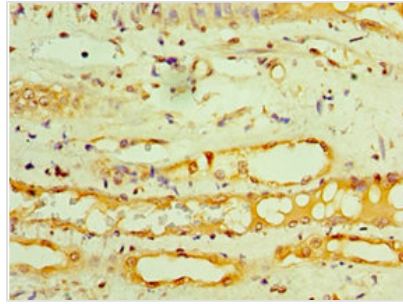
Lane 2: HepG2 whole cell lysate

Secondary

Goat polyclonal to rabbit IgG at 1/10000 dilution

Predicted band size: 51, 50, 36 kDa

Observed band size: 51 kDa



Immunohistochemistry of paraffin-embedded human kidney tissue using CSB-PA862075ESR1HU at dilution of 1:100

Usage

For Research Use Only. Not for use in diagnostic or therapeutic procedures.