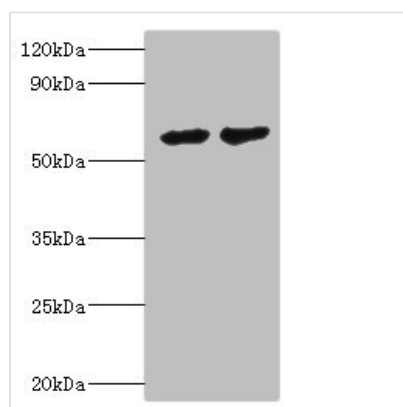




CYP4F12 Antibody

| | |
|----------------------------|---|
| Product Code | CSB-PA864033ESR2HU |
| Storage | Upon receipt, store at -20°C or -80°C. Avoid repeated freeze. |
| Uniprot No. | Q9HCS2 |
| Immunogen | Recombinant Human Cytochrome P450 4F12 protein (265-524AA) |
| Raised In | Rabbit |
| Species Reactivity | Human, Mouse, Rat |
| Tested Applications | ELISA, WB, IHC; Recommended dilution: WB:1:500-1:5000, IHC:1:20-1:200 |
| Form | Liquid |
| Conjugate | Non-conjugated |
| Storage Buffer | PBS with 0.02% sodium azide, 50% glycerol, pH7.3. |
| Purification Method | Antigen Affinity Purified |
| Isotype | IgG |
| Clonality | Polyclonal |
| Alias | Cytochrome P450 4F12 (EC 1.14.14.1) (CYP1VF12), CYP4F12 |
| Immunogen Species | Homo sapiens (Human) |
| Research Area | Immunology |
| Target Names | CYP4F12 |

Image



Western blot

All lanes: CYP4F12 antibody at 6µg/ml

Lane 1: Mouse small intestine tissue

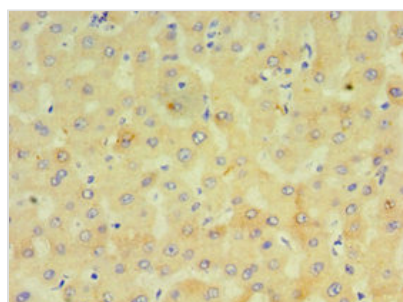
Lane 2: Rat liver tissue

Secondary

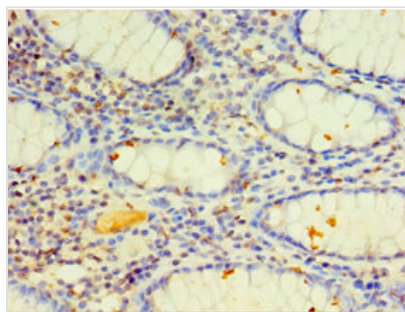
Goat polyclonal to rabbit IgG at 1/10000 dilution

Predicted band size: 61, 12 kDa

Observed band size: 61 kDa



Immunohistochemistry of paraffin-embedded human liver tissue using CSB-PA864033ESR2HU at dilution of 1:100



Immunohistochemistry of paraffin-embedded human colon cancer using CSB-PA864033ESR2HU at dilution of 1:100

Usage

For Research Use Only. Not for use in diagnostic or therapeutic procedures.