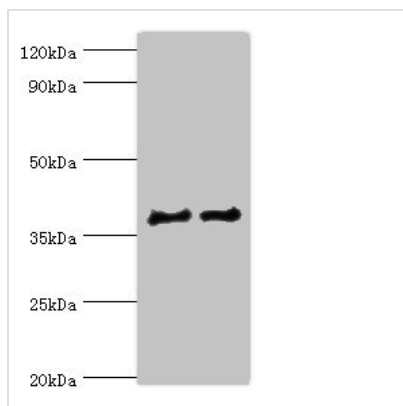




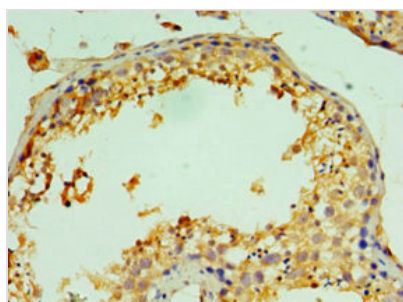
CTSV Antibody

Product Code	CSB-PA006194ESR2HU
Storage	Upon receipt, store at -20°C or -80°C. Avoid repeated freeze.
Uniprot No.	O60911
Immunogen	Recombinant Human Cathepsin L2 protein (105-334AA)
Raised In	Rabbit
Species Reactivity	Human
Tested Applications	ELISA, WB, IHC; Recommended dilution: WB:1:500-1:2000, IHC:1:20-1:200
Form	Liquid
Conjugate	Non-conjugated
Storage Buffer	PBS with 0.02% sodium azide, 50% glycerol, pH7.3.
Purification Method	Antigen Affinity Purified
Isotype	IgG
Clonality	Polyclonal
Alias	Cathepsin L2 (EC 3.4.22.43) (Cathepsin U) (Cathepsin V), CTSV, CATL2 CTSL2 CTSU
Immunogen Species	Homo sapiens (Human)
Research Area	Signal Transduction
Target Names	CTSV

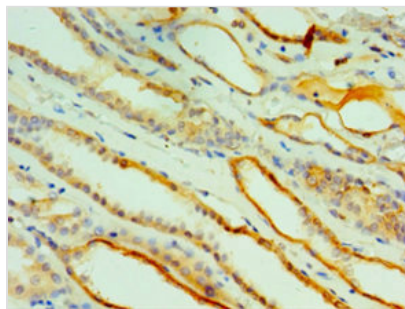
Image



Western blot
 All lanes: CTSV antibody at 12µg/ml
 Lane 1: Jurkat whole cell lysate
 Lane 2: MCF-7 whole cell lysate
 Secondary
 Goat polyclonal to rabbit IgG at 1/10000 dilution
 Predicted band size: 37 kDa
 Observed band size: 37 kDa



Immunohistochemistry of paraffin-embedded human testis tissue using CSB-PA006194ESR2HU at dilution of 1:100



Immunohistochemistry of paraffin-embedded human kidney tissue using CSB-PA006194ESR2HU at dilution of 1:100

Usage

For Research Use Only. Not for use in diagnostic or therapeutic procedures.