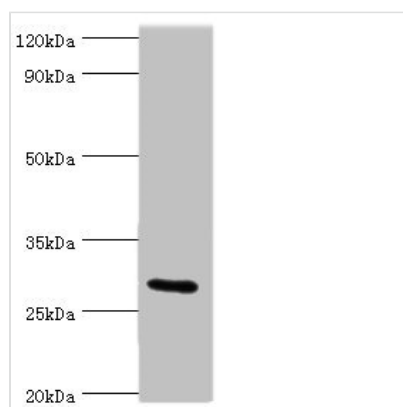




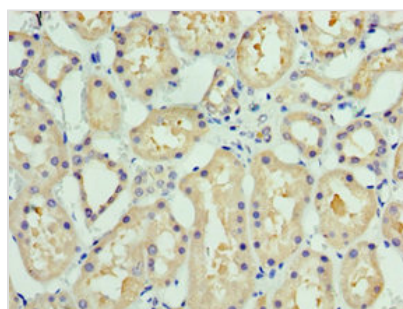
COLEC11 Antibody

Product Code	CSB-PA861154ESR2HU
Storage	Upon receipt, store at -20°C or -80°C. Avoid repeated freeze.
Uniprot No.	Q9BWP8
Immunogen	Recombinant Human Collectin-11 protein (26-271AA)
Raised In	Rabbit
Species Reactivity	Human, Rat
Tested Applications	ELISA, WB, IHC; Recommended dilution: WB:1:500-1:2000, IHC:1:20-1:200
Form	Liquid
Conjugate	Non-conjugated
Storage Buffer	PBS with 0.02% sodium azide, 50% glycerol, pH7.3.
Purification Method	Antigen Affinity Purified
Isotype	IgG
Clonality	Polyclonal
Alias	Collectin-11 (Collectin kidney protein 1) (CL-K1), COLEC11
Immunogen Species	Homo sapiens (Human)
Research Area	Cell Biology
Target Names	COLEC11

Image



Western blot
All lanes: COLEC11 antibody at 4μg/ml + Rat liver tissue
Secondary
Goat polyclonal to rabbit IgG at 1/10000 dilution
Predicted band size: 29, 27, 22, 30, 25, 24, 31 kDa
Observed band size: 29 kDa



Immunohistochemistry of paraffin-embedded human kidney tissue using CSB-PA861154ESR2HU at dilution of 1:100