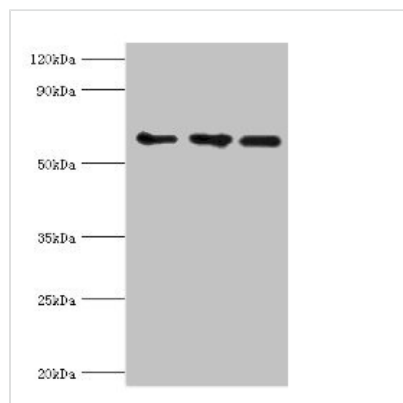




ABCE1 Antibody

Product Code	CSB-PA001076ESR2HU
Storage	Upon receipt, store at -20°C or -80°C. Avoid repeated freeze.
Uniprot No.	P61221
Immunogen	Recombinant Human ATP-binding cassette sub-family E member 1 protein (320-599AA)
Raised In	Rabbit
Species Reactivity	Human
Tested Applications	ELISA, WB, IHC; Recommended dilution: WB:1:200-1:1000, IHC:1:20-1:200
Form	Liquid
Conjugate	Non-conjugated
Storage Buffer	PBS with 0.02% sodium azide, 50% glycerol, pH7.3.
Purification Method	Antigen Affinity Purified
Isotype	IgG
Clonality	Polyclonal
Alias	ATP-binding cassette sub-family E member 1 (2'-5'-oligoadenylate-binding protein) (HuHP68) (RNase L inhibitor) (Ribonuclease 4 inhibitor) (RNS4I), ABCE1, RLI RNASEL1 RNASELI RNS4I
Immunogen Species	Homo sapiens (Human)
Research Area	Signal Transduction
Target Names	ABCE1

Image



Western blot

All lanes: ABCE1 antibody at 4μg/ml

Lane 1: 293T whole cell lysate

Lane 2: Hela whole cell lysate

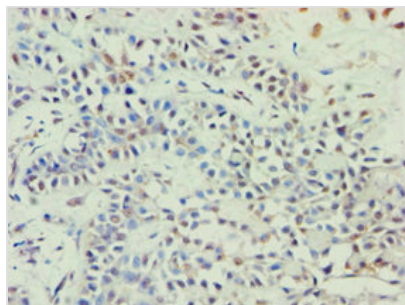
Lane 3: k562 whole cell lysate

Secondary

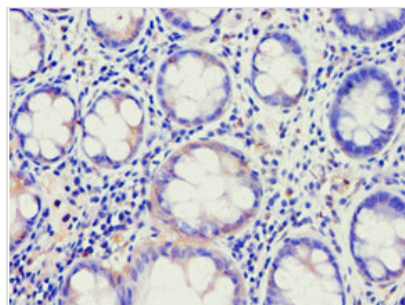
Goat polyclonal to rabbit IgG at 1/10000 dilution

Predicted band size: 67 kDa

Observed band size: 67 kDa



Immunohistochemistry of paraffin-embedded human breast cancer using CSB-PA001076ESR2HU at dilution of 1:100



Immunohistochemistry of paraffin-embedded human colon cancer using CSB-PA001076ESR2HU at dilution of 1:100