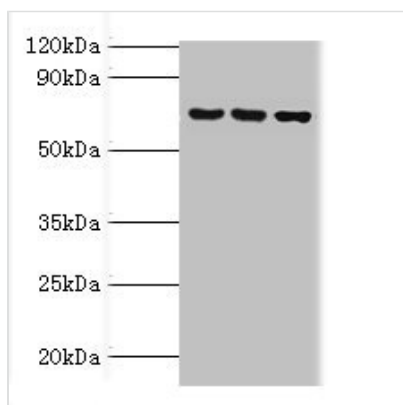




ABCF2 Antibody

Product Code	CSB-PA871400ESR2HU
Storage	Upon receipt, store at -20°C or -80°C. Avoid repeated freeze.
Uniprot No.	Q9UG63
Immunogen	Recombinant Human ATP-binding cassette sub-family F member 2 protein (1-250AA)
Raised In	Rabbit
Species Reactivity	Human
Tested Applications	ELISA, WB, IHC; Recommended dilution: WB:1:200-1:1000, IHC:1:20-1:200
Form	Liquid
Conjugate	Non-conjugated
Storage Buffer	PBS with 0.02% sodium azide, 50% glycerol, pH7.3.
Purification Method	Antigen Affinity Purified
Isotype	IgG
Clonality	Polyclonal
Alias	ATP-binding cassette sub-family F member 2 (Iron-inhibited ABC transporter 2), ABCF2
Immunogen Species	Homo sapiens (Human)
Research Area	Signal Transduction
Target Names	ABCF2

Image



Western blot

All lanes: ABCF2 antibody at 4µg/ml

Lane 1: 293T whole cell lysate

Lane 2: HeLa whole cell lysate

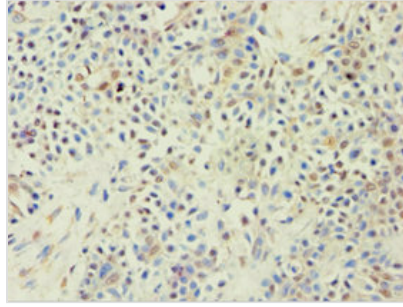
Lane 3: NIH/3T3 whole cell lysate

Secondary

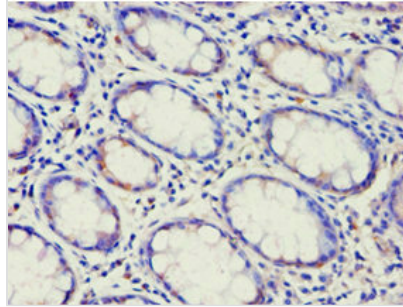
Goat polyclonal to rabbit IgG at 1/10000 dilution

Predicted band size: 72, 73 kDa

Observed band size: 72 kDa



Immunohistochemistry of paraffin-embedded human breast cancer using CSB-PA871400ESR2HU at dilution of 1:100



Immunohistochemistry of paraffin-embedded human colon cancer using CSB-PA871400ESR2HU at dilution of 1:100

Usage

For Research Use Only. Not for use in diagnostic or therapeutic procedures.