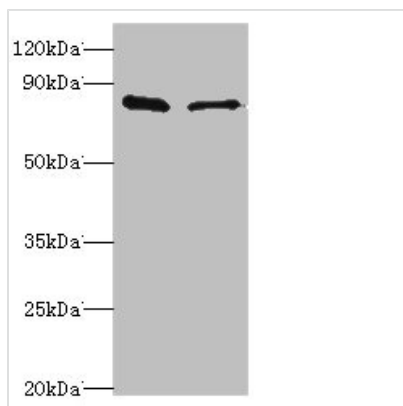




SLC39A6 Antibody

Product Code	CSB-PA621669DSR2HU
Storage	Upon receipt, store at -20°C or -80°C. Avoid repeated freeze.
Uniprot No.	Q13433
Immunogen	Recombinant Human Zinc transporter ZIP6 protein (170-320AA)
Raised In	Rabbit
Species Reactivity	Human
Tested Applications	ELISA, WB, IHC; Recommended dilution: WB:1:500-1:2000, IHC:1:20-1:200
Form	Liquid
Conjugate	Non-conjugated
Storage Buffer	PBS with 0.02% sodium azide, 50% glycerol, pH7.3.
Purification Method	Antigen Affinity Purified
Isotype	IgG
Clonality	Polyclonal
Alias	Zinc transporter ZIP6 (Estrogen-regulated protein LIV-1) (Solute carrier family 39 member 6) (Zrt- and Irt-like protein 6) (ZIP-6), SLC39A6, LIV1 ZIP6
Immunogen Species	Homo sapiens (Human)
Research Area	Signal Transduction
Target Names	SLC39A6

Image



Western blot

All lanes: SLC39A6 antibody at 10µg/ml

Lane 1: Hela whole cell lysate

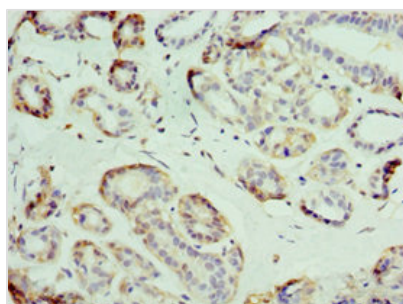
Lane 2: 293T whole cell lysate

Secondary

Goat polyclonal to rabbit IgG at 1/10000 dilution

Predicted band size: 86, 49 kDa

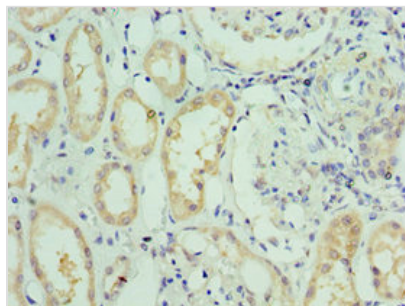
Observed band size: 86 kDa



Immunohistochemistry of paraffin-embedded

human breast cancer using CSB-

PA621669DSR2HU at dilution of 1:100



Immunohistochemistry of paraffin-embedded human kidney tissue using CSB-PA621669DSR2HU at dilution of 1:100

Usage

For Research Use Only. Not for use in diagnostic or therapeutic procedures.