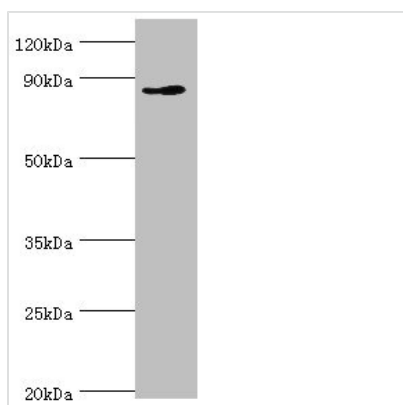




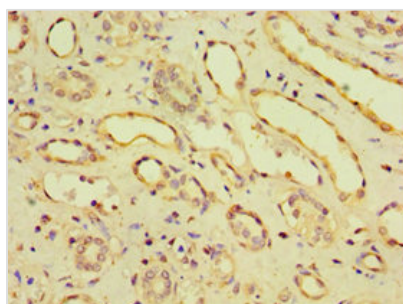
# CDH11 Antibody

<b>Product Code</b>	CSB-PA005036ESR1HU
<b>Storage</b>	Upon receipt, store at -20°C or -80°C. Avoid repeated freeze.
<b>Uniprot No.</b>	P55287
<b>Immunogen</b>	Recombinant Human Cadherin-11 protein (637-796AA)
<b>Raised In</b>	Rabbit
<b>Species Reactivity</b>	Human
<b>Tested Applications</b>	ELISA, WB, IHC, IP; Recommended dilution: WB:1:500-1:2000, IHC:1:20-1:200, IP:1:200-1:2000
<b>Form</b>	Liquid
<b>Conjugate</b>	Non-conjugated
<b>Storage Buffer</b>	PBS with 0.02% sodium azide, 50% glycerol, pH7.3.
<b>Purification Method</b>	Antigen Affinity Purified
<b>Isotype</b>	IgG
<b>Clonality</b>	Polyclonal
<b>Alias</b>	Cadherin-11 (OSF-4) (Osteoblast cadherin) (OB-cadherin), CDH11
<b>Immunogen Species</b>	Homo sapiens (Human)
<b>Research Area</b>	Signal Transduction
<b>Target Names</b>	CDH11

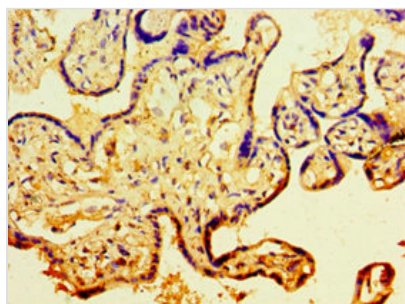
## Image



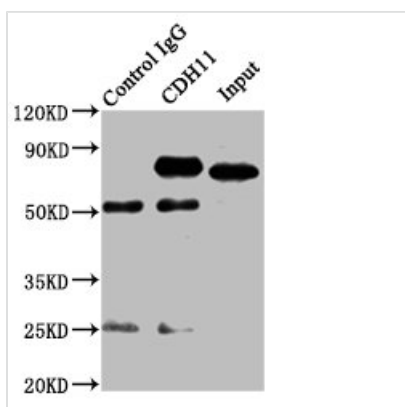
Western blot  
 All lanes: CDH11 antibody at 6µg/ml + Jurkat whole cell lysate  
 Secondary  
 Goat polyclonal to rabbit IgG at 1/10000 dilution  
 Predicted band size: 88, 77 kDa  
 Observed band size: 88 kDa



Immunohistochemistry of paraffin-embedded human kidney tissue using CSB-PA005036ESR1HU at dilution of 1:100



Immunohistochemistry of paraffin-embedded human placenta tissue using CSB-PA005036ESR1HU at dilution of 1:100



Immunoprecipitating CDH11 in SH-SY5Y whole cell lysate

Lane 1: Rabbit control IgG instead of CSB-PA005036ESR1HU in SH-SY5Y whole cell lysate. For western blotting, a HRP-conjugated Protein G antibody was used as the secondary antibody (1/5000)

Lane 2: CSB-PA005036ESR1HU (8 $\mu$ g) + SH-SY5Y whole cell lysate (500 $\mu$ g)

Lane 3: SH-SY5Y whole cell lysate (20 $\mu$ g)

## Usage

For Research Use Only. Not for use in diagnostic or therapeutic procedures.