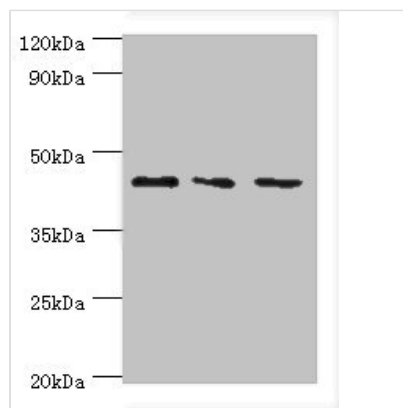




CHI3L2 Antibody

Product Code	CSB-PA620893ESR1HU
Storage	Upon receipt, store at -20°C or -80°C. Avoid repeated freeze.
Uniprot No.	Q15782
Immunogen	Recombinant Human Chitinase-3-like protein 2 protein (27-390AA)
Raised In	Rabbit
Species Reactivity	Human, Rat
Tested Applications	ELISA, WB, IHC; Recommended dilution: WB:1:500-1:2000, IHC:1:20-1:200
Form	Liquid
Conjugate	Non-conjugated
Storage Buffer	PBS with 0.02% sodium azide, 50% glycerol, pH7.3.
Purification Method	Antigen Affinity Purified
Isotype	IgG
Clonality	Polyclonal
Alias	Chitinase-3-like protein 2 (Chondrocyte protein 39) (YKL-39), CHI3L2
Immunogen Species	Homo sapiens (Human)
Research Area	Stem Cells
Target Names	CHI3L2

Image



Western blot

All lanes: CHI3L2 antibody at 4µg/ml

Lane 1: HeLa whole cell lysate

Lane 2: Rat brain tissue

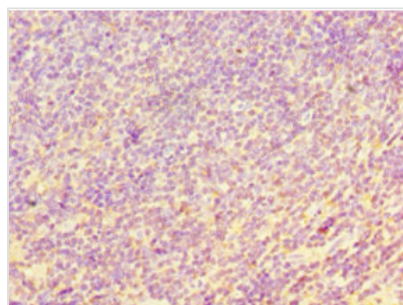
Lane 3: A431 whole cell lysate

Secondary

Goat polyclonal to rabbit IgG at 1/10000 dilution

Predicted band size: 44, 35, 43 kDa

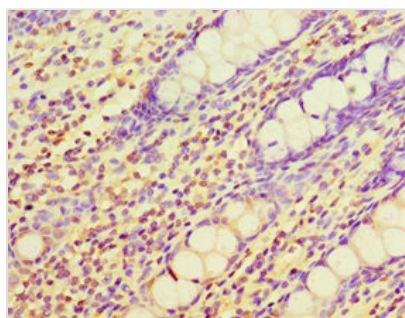
Observed band size: 44 kDa



Immunohistochemistry of paraffin-embedded

human tonsil tissue using CSB-

PA620893ESR1HU at dilution of 1:100



Immunohistochemistry of paraffin-embedded human colon tissue using CSB-PA620893ESR1HU at dilution of 1:100

Usage

For Research Use Only. Not for use in diagnostic or therapeutic procedures.