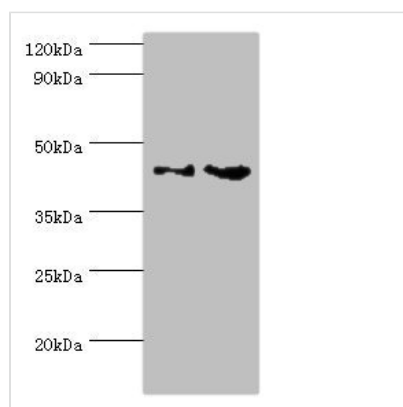




# CHI3L2 Antibody

<b>Product Code</b>	CSB-PA620893ESR2HU
<b>Storage</b>	Upon receipt, store at -20°C or -80°C. Avoid repeated freeze.
<b>Uniprot No.</b>	Q15782
<b>Immunogen</b>	Recombinant Human Chitinase-3-like protein 2 protein (27-390AA)
<b>Raised In</b>	Rabbit
<b>Species Reactivity</b>	Human, Rat
<b>Tested Applications</b>	ELISA, WB, IHC; Recommended dilution: WB:1:500-1:2000, IHC:1:20-1:200
<b>Form</b>	Liquid
<b>Conjugate</b>	Non-conjugated
<b>Storage Buffer</b>	PBS with 0.02% sodium azide, 50% glycerol, pH7.3.
<b>Purification Method</b>	Antigen Affinity Purified
<b>Isotype</b>	IgG
<b>Clonality</b>	Polyclonal
<b>Alias</b>	Chitinase-3-like protein 2 (Chondrocyte protein 39) (YKL-39), CHI3L2
<b>Immunogen Species</b>	Homo sapiens (Human)
<b>Research Area</b>	Stem Cells
<b>Target Names</b>	CHI3L2

## Image



### Western blot

All lanes: CHI3L2 antibody at 4µg/ml

Lane 1: Rat brain tissue

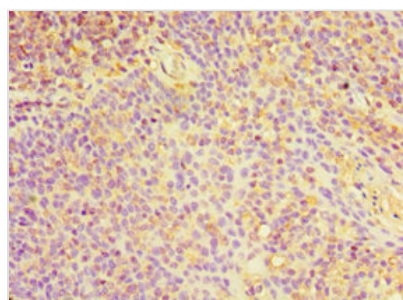
Lane 2: A431 whole cell lysate

Secondary

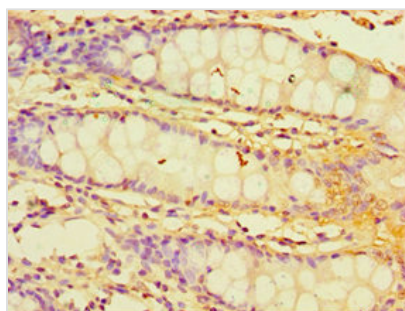
Goat polyclonal to rabbit IgG at 1/10000 dilution

Predicted band size: 44, 35, 43 kDa

Observed band size: 44 kDa



Immunohistochemistry of paraffin-embedded human tonsil tissue using CSB-PA620893ESR2HU at dilution of 1:100



Immunohistochemistry of paraffin-embedded human colon tissue using CSB-PA620893ESR2HU at dilution of 1:100

---

**Usage**

For Research Use Only. Not for use in diagnostic or therapeutic procedures.