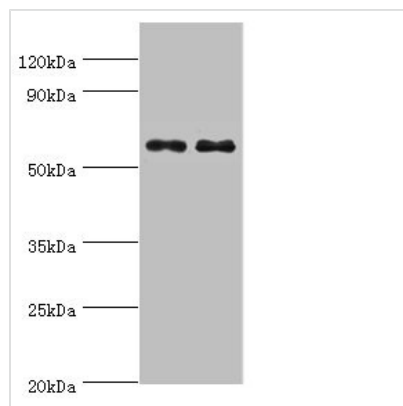




# NELFCD Antibody

<b>Product Code</b>	CSB-PA815573ESR2HU
<b>Storage</b>	Upon receipt, store at -20°C or -80°C. Avoid repeated freeze.
<b>Uniprot No.</b>	Q8IXH7
<b>Immunogen</b>	Recombinant Human Negative elongation factor C/D protein (346-590AA)
<b>Raised In</b>	Rabbit
<b>Species Reactivity</b>	Human
<b>Tested Applications</b>	ELISA, WB, IHC; Recommended dilution: WB:1:200-1:1000, IHC:1:20-1:200
<b>Form</b>	Liquid
<b>Conjugate</b>	Non-conjugated
<b>Storage Buffer</b>	PBS with 0.02% sodium azide, 50% glycerol, pH7.3.
<b>Purification Method</b>	Antigen Affinity Purified
<b>Isotype</b>	IgG
<b>Clonality</b>	Polyclonal
<b>Alias</b>	Negative elongation factor C/D (NELF-C/D) (TH1-like protein), NELFCD, NELFD TH1 TH1L
<b>Immunogen Species</b>	Homo sapiens (Human)
<b>Research Area</b>	Epigenetics and Nuclear Signaling
<b>Target Names</b>	NELFCD

## Image



### Western blot

All lanes: NELFCD antibody at 8µg/ml

Lane 1: Jurkat whole cell lysate

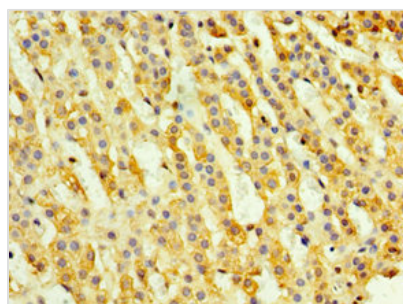
Lane 2: Hela whole cell lysate

Secondary

Goat polyclonal to rabbit IgG at 1/10000 dilution

Predicted band size: 67, 23, 66 kDa

Observed band size: 67 kDa



Immunohistochemistry of paraffin-embedded

human adrenal gland tissue using CSB-

PA815573ESR2HU at dilution of 1:100



---

**Usage**

For Research Use Only. Not for use in diagnostic or therapeutic procedures.