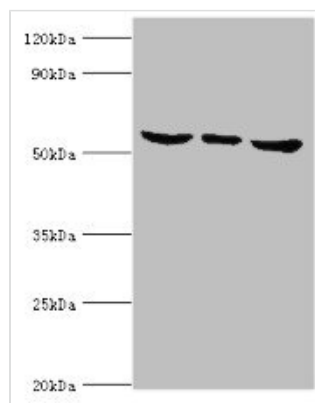




MAPK15 Antibody

Product Code	CSB-PA013454ESR2HU
Storage	Upon receipt, store at -20°C or -80°C. Avoid repeated freeze.
Uniprot No.	Q8TD08
Immunogen	Recombinant Human Mitogen-activated protein kinase 15 protein (1-95AA)
Raised In	Rabbit
Species Reactivity	Human
Tested Applications	ELISA, WB, IHC; Recommended dilution: WB:1:500-1:5000, IHC:1:20-1:200
Form	Liquid
Conjugate	Non-conjugated
Storage Buffer	PBS with 0.02% sodium azide, 50% glycerol, pH7.3.
Purification Method	Antigen Affinity Purified
Isotype	IgG
Clonality	Polyclonal
Alias	Mitogen-activated protein kinase 15 (MAP kinase 15) (MAPK 15) (EC 2.7.11.24) (Extracellular signal-regulated kinase 7) (ERK-7) (Extracellular signal-regulated kinase 8) (ERK-8), MAPK15, ERK7 ERK8
Immunogen Species	Homo sapiens (Human)
Research Area	Signal Transduction
Target Names	MAPK15

Image



Western blot

All lanes: MAPK15 antibody at 6µg/ml

Lane 1: HeLa whole cell lysate

Lane 2: MCF-7 whole cell lysate

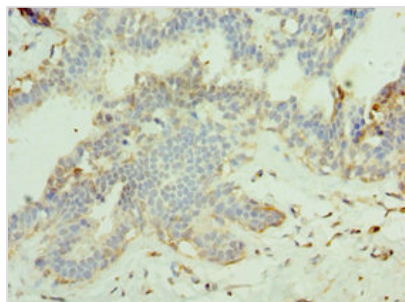
Lane 3: HepG2 whole cell lysate

Secondary

Goat polyclonal to rabbit IgG at 1/10000 dilution

Predicted band size: 60, 29, 32 kDa

Observed band size: 60 kDa



Immunohistochemistry of paraffin-embedded human breast cancer using CSB-PA013454ESR2HU at dilution of 1:100

Usage

For Research Use Only. Not for use in diagnostic or therapeutic procedures.