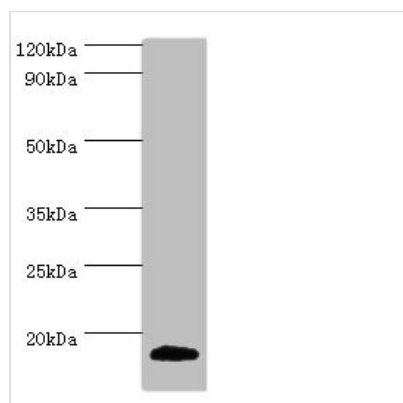




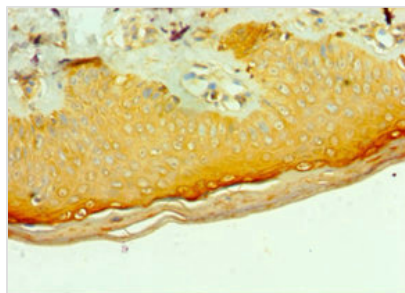
# MLANA Antibody

<b>Product Code</b>	CSB-PA621968ESR2HU
<b>Storage</b>	Upon receipt, store at -20°C or -80°C. Avoid repeated freeze.
<b>Uniprot No.</b>	Q16655
<b>Immunogen</b>	Recombinant Human Melanoma antigen recognized by T-cells 1 protein (48-118AA)
<b>Raised In</b>	Rabbit
<b>Species Reactivity</b>	Human, Mouse
<b>Tested Applications</b>	ELISA, WB, IHC; Recommended dilution: WB:1:200-1:1000, IHC:1:20-1:200
<b>Form</b>	Liquid
<b>Conjugate</b>	Non-conjugated
<b>Storage Buffer</b>	PBS with 0.02% sodium azide, 50% glycerol, pH7.3.
<b>Purification Method</b>	Antigen Affinity Purified
<b>Isotype</b>	IgG
<b>Clonality</b>	Polyclonal
<b>Alias</b>	Melanoma antigen recognized by T-cells 1 (MART-1) (Antigen LB39-AA) (Antigen SK29-AA) (Protein Melan-A), MLANA, MART1
<b>Immunogen Species</b>	Homo sapiens (Human)
<b>Research Area</b>	Tags & Cell Markers
<b>Target Names</b>	MLANA

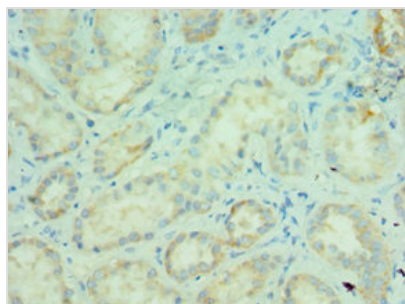
## Image



Western blot  
 All lanes: MLANA antibody at 2µg/ml + Mouse eye tissue  
 Secondary  
 Goat polyclonal to rabbit IgG at 1/10000 dilution  
 Predicted band size: 13 kDa  
 Observed band size: 13 kDa



Immunohistochemistry of paraffin-embedded human skin tissue using CSB-PA621968ESR2HU at dilution of 1:100



Immunohistochemistry of paraffin-embedded human kidney tissue using CSB-PA621968ESR2HU at dilution of 1:100

## Usage

For Research Use Only. Not for use in diagnostic or therapeutic procedures.