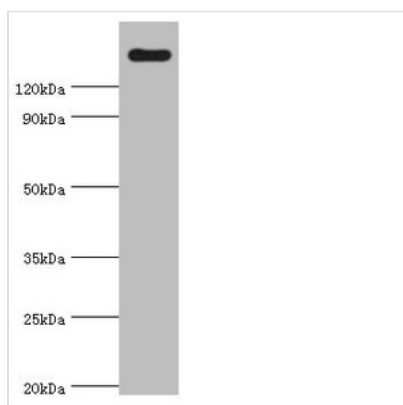




CARD11 Antibody

Product Code	CSB-PA866306ESR1HU
Storage	Upon receipt, store at -20°C or -80°C. Avoid repeated freeze.
Uniprot No.	Q9BXL7
Immunogen	Recombinant Human Caspase recruitment domain-containing protein 11 protein (985-1154AA)
Raised In	Rabbit
Species Reactivity	Human
Tested Applications	ELISA, WB; Recommended dilution: WB:1:500-1:2000
Form	Liquid
Conjugate	Non-conjugated
Storage Buffer	PBS with 0.02% sodium azide, 50% glycerol, pH7.3.
Purification Method	Antigen Affinity Purified
Isotype	IgG
Clonality	Polyclonal
Alias	Caspase recruitment domain-containing protein 11 (CARD-containing MAGUK protein 1) (Carma 1), CARD11, CARMA1
Immunogen Species	Homo sapiens (Human)
Research Area	Immunology
Target Names	CARD11

Image



Western blot
 All lanes: CARD11 antibody at 4µg/ml + K562 whole cell lysate
 Secondary
 Goat polyclonal to rabbit IgG at 1/10000 dilution
 Predicted band size: 133 kDa
 Observed band size: 133 kDa

Usage

For Research Use Only. Not for use in diagnostic or therapeutic procedures.