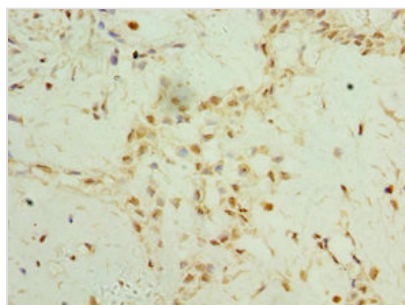




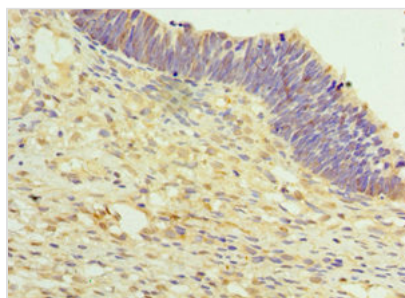
TET2 Antibody

Product Code	CSB-PA764560ESR1HU
Storage	Upon receipt, store at -20°C or -80°C. Avoid repeated freeze.
Uniprot No.	Q6N021
Immunogen	Recombinant Human Methylcytosine dioxygenase TET2 protein (1833-2002AA)
Raised In	Rabbit
Species Reactivity	Human
Tested Applications	ELISA, IHC; Recommended dilution: IHC:1:20-1:200
Form	Liquid
Conjugate	Non-conjugated
Storage Buffer	PBS with 0.02% sodium azide, 50% glycerol, pH7.3.
Purification Method	Antigen Affinity Purified
Isotype	IgG
Clonality	Polyclonal
Alias	Methylcytosine dioxygenase TET2 (EC 1.14.11.n2), TET2, KIAA1546
Immunogen Species	Homo sapiens (Human)
Research Area	Epigenetics and Nuclear Signaling
Target Names	TET2

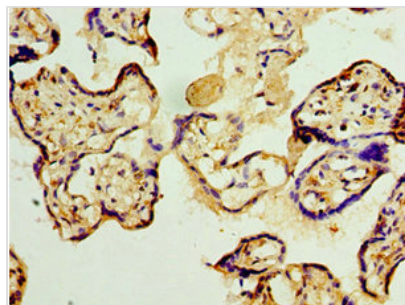
Image



Immunohistochemistry of paraffin-embedded human breast cancer using CSB-PA764560ESR1HU at dilution of 1:100



Immunohistochemistry of paraffin-embedded human ovarian cancer using CSB-PA764560ESR1HU at dilution of 1:100



Immunohistochemistry of paraffin-embedded human placenta tissue using CSB-PA764560ESR1HU at dilution of 1:100