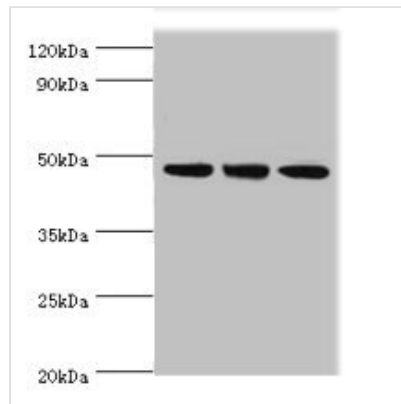




PELI1 Antibody

Product Code	CSB-PA856932ESR1HU
Storage	Upon receipt, store at -20°C or -80°C. Avoid repeated freeze.
Uniprot No.	Q96FA3
Immunogen	Recombinant Human E3 ubiquitin-protein ligase pellino homolog 1 protein (1-250AA)
Raised In	Rabbit
Species Reactivity	Human, Mouse
Tested Applications	ELISA, WB, IHC; Recommended dilution: WB:1:200-1:1000, IHC:1:20-1:200
Form	Liquid
Conjugate	Non-conjugated
Storage Buffer	PBS with 0.02% sodium azide, 50% glycerol, pH7.3.
Purification Method	Antigen Affinity Purified
Isotype	IgG
Clonality	Polyclonal
Alias	E3 ubiquitin-protein ligase pellino homolog 1 (Pellino-1) (EC 2.3.2.27) (Pellino-related intracellular-signaling molecule) (RING-type E3 ubiquitin transferase pellino homolog 1), PELI1, PRISM
Immunogen Species	Homo sapiens (Human)
Research Area	Signal Transduction
Target Names	PELI1

Image



Western blot

All lanes: PELI1 antibody at 7µg/ml

Lane 1: HL60 whole cell lysate

Lane 2: Mouse liver tissue

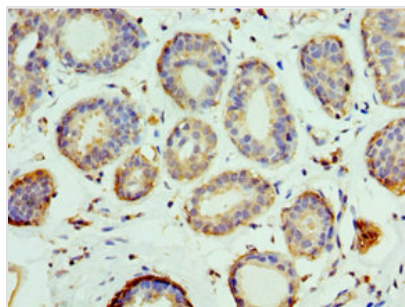
Lane 3: THP-1 whole cell lysate

Secondary

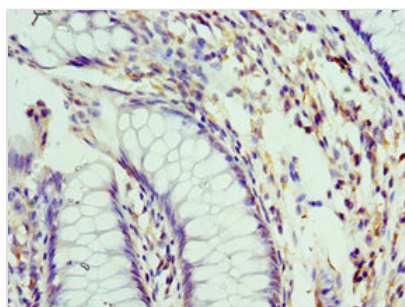
Goat polyclonal to rabbit IgG at 1/10000 dilution

Predicted band size: 46 kDa

Observed band size: 46 kDa



Immunohistochemistry of paraffin-embedded human breast cancer using CSB-PA856932ESR1HU at dilution of 1:100



Immunohistochemistry of paraffin-embedded human colon cancer using CSB-PA856932ESR1HU at dilution of 1:100

Usage

For Research Use Only. Not for use in diagnostic or therapeutic procedures.