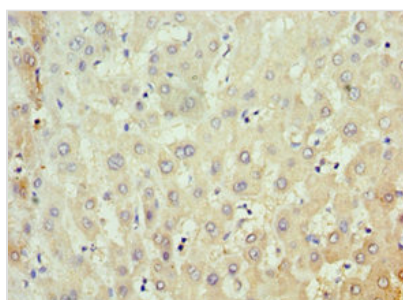




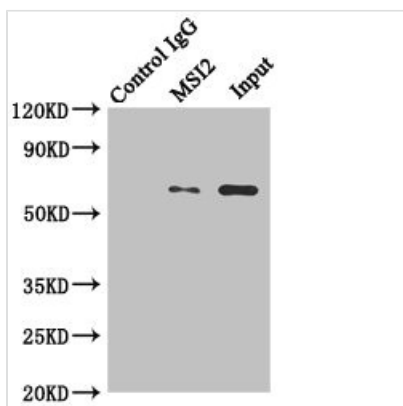
MKS1 Antibody

Product Code	CSB-PA882132ESR2HU
Storage	Upon receipt, store at -20°C or -80°C. Avoid repeated freeze.
Uniprot No.	Q9NXB0
Immunogen	Recombinant Human Meckel syndrome type 1 protein (150-300AA)
Raised In	Rabbit
Species Reactivity	Human
Tested Applications	ELISA, IHC, IP; Recommended dilution: IHC:1:20-1:200, IP:1:200-1:2000
Form	Liquid
Conjugate	Non-conjugated
Storage Buffer	PBS with 0.02% sodium azide, 50% glycerol, pH7.3.
Purification Method	Antigen Affinity Purified
Isotype	IgG
Clonality	Polyclonal
Alias	Meckel syndrome type 1 protein, MKS1
Immunogen Species	Homo sapiens (Human)
Research Area	Tags & Cell Markers
Target Names	MKS1

Image



Immunohistochemistry of paraffin-embedded human liver tissue using CSB-PA882132ESR2HU at dilution of 1:100



Immunoprecipitating MKS1 in HeLa whole cell lysate
 Lane 1: Rabbit control IgG instead of (1μg) instead of CSB-PA882132ESR2HU in HeLa whole cell lysate. For western blotting, a HRP-conjugated anti-rabbit IgG, specific to the non-reduced form of IgG was used as the Secondary antibody (1/50000)
 Lane 2: CSB-PA882132ESR2HU (4μg) + HeLa whole cell lysate (500μg)
 Lane 3: HeLa whole cell lysate (20μg)



Usage

For Research Use Only. Not for use in diagnostic or therapeutic procedures.