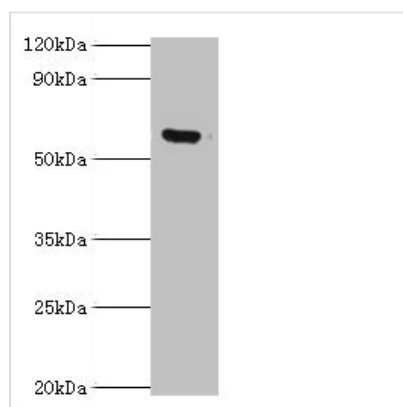




MKS1 Antibody

Product Code	CSB-PA882132ESR1HU
Storage	Upon receipt, store at -20°C or -80°C. Avoid repeated freeze.
Uniprot No.	Q9NXB0
Immunogen	Recombinant Human Meckel syndrome type 1 protein (150-300AA)
Raised In	Rabbit
Species Reactivity	Human
Tested Applications	ELISA, WB; Recommended dilution: WB:1:200-1:1000
Form	Liquid
Conjugate	Non-conjugated
Storage Buffer	PBS with 0.02% sodium azide, 50% glycerol, pH7.3.
Purification Method	Antigen Affinity Purified
Isotype	IgG
Clonality	Polyclonal
Alias	Meckel syndrome type 1 protein, MKS1
Immunogen Species	Homo sapiens (Human)
Research Area	Tags & Cell Markers
Target Names	MKS1

Image



Western blot
 All lanes: MKS1 antibody at 6µg/ml + HeLa whole cell lysate
 Secondary
 Goat polyclonal to rabbit IgG at 1/10000 dilution
 Predicted band size: 65, 60, 64 kDa
 Observed band size: 65 kDa

Usage For Research Use Only. Not for use in diagnostic or therapeutic procedures.