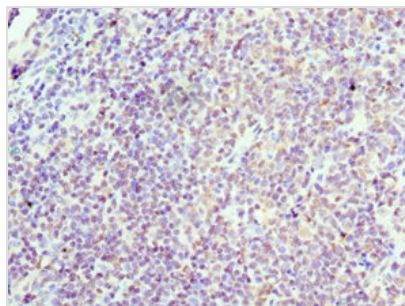




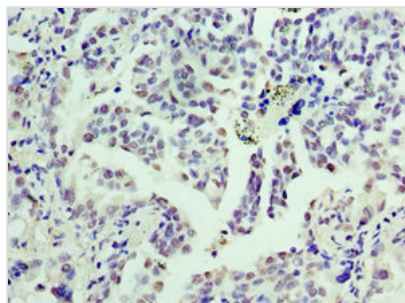
# CCND3 Antibody

<b>Product Code</b>	CSB-PA004814ESR2HU
<b>Storage</b>	Upon receipt, store at -20°C or -80°C. Avoid repeated freeze.
<b>Uniprot No.</b>	P30281
<b>Immunogen</b>	Recombinant Human G1/S-specific cyclin-D3 protein (1-292AA)
<b>Raised In</b>	Rabbit
<b>Species Reactivity</b>	Human
<b>Tested Applications</b>	ELISA, WB, IHC, IF, IP; Recommended dilution: WB:1:500-1:2000, IHC:1:20-1:200, IF:1:50-1:200, IP:1:200-1:2000
<b>Form</b>	Liquid
<b>Conjugate</b>	Non-conjugated
<b>Storage Buffer</b>	PBS with 0.02% sodium azide, 50% glycerol, pH7.3.
<b>Purification Method</b>	Antigen Affinity Purified
<b>Isotype</b>	IgG
<b>Clonality</b>	Polyclonal
<b>Alias</b>	G1/S-specific cyclin-D3, CCND3
<b>Immunogen Species</b>	Homo sapiens (Human)
<b>Research Area</b>	Others
<b>Target Names</b>	CCND3

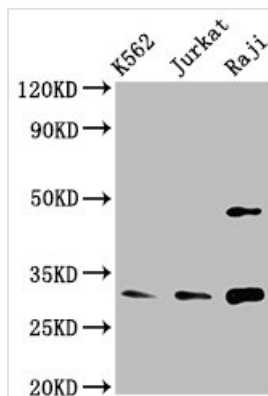
## Image



Immunohistochemistry of paraffin-embedded human tonsil tissue using CSB-PA004814ESR2HU at dilution of 1:100



Immunohistochemistry of paraffin-embedded human lung cancer using CSB-PA004814ESR2HU at dilution of 1:100



#### Western Blot

Positive WB detected in: K562 whole cell lysate, Jurkat whole cell lysate, Raji whole cell lysate

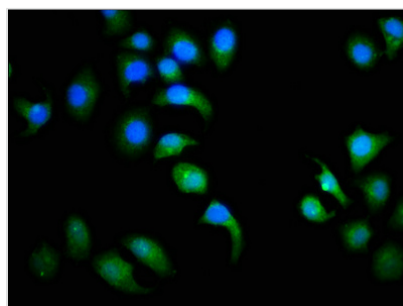
All lanes: CCND3 antibody at 3.4µg/ml

#### Secondary

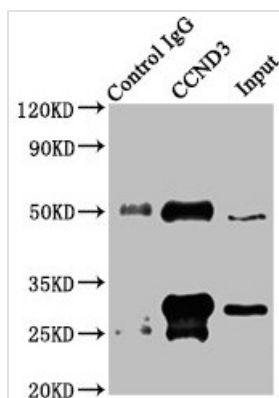
Goat polyclonal to rabbit IgG at 1/50000 dilution

Predicted band size: 33 kDa

Observed band size: 33 kDa



Immunofluorescence staining of A549 cells with CSB-PA004814ESR2HU at 1:113, counter-stained with DAPI. The cells were fixed in 4% formaldehyde, permeabilized using 0.2% Triton X-100 and blocked in 10% normal Goat Serum. The cells were then incubated with the antibody overnight at 4°C. The secondary antibody was Alexa Fluor 488-conjugated AffiniPure Goat Anti-Rabbit IgG (H+L).



#### Immunoprecipitating CCND3 in Jurkat whole cell lysate

Lane 1: Rabbit control IgG instead of CSB-PA004814ESR2HU in Jurkat whole cell lysate.

For western blotting, a HRP-conjugated Protein G antibody was used as the secondary antibody (1/2000)

Lane 2: CSB-PA004814ESR2HU (5µg) + Jurkat whole cell lysate (500µg)

Lane 3: Jurkat whole cell lysate (20µg)