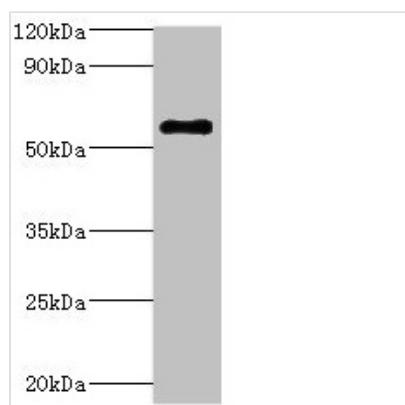




ATP6V1B2 Antibody

| | |
|----------------------------|---|
| Product Code | CSB-PA002398ESR1HU |
| Storage | Upon receipt, store at -20°C or -80°C. Avoid repeated freeze. |
| Uniprot No. | P21281 |
| Immunogen | Recombinant Human V-type proton ATPase subunit B, brain isoform protein (262-511AA) |
| Raised In | Rabbit |
| Species Reactivity | Human |
| Tested Applications | ELISA, WB; Recommended dilution: WB:1:1000-1:5000 |
| Form | Liquid |
| Conjugate | Non-conjugated |
| Storage Buffer | PBS with 0.02% sodium azide, 50% glycerol, pH7.3. |
| Purification Method | Antigen Affinity Purified |
| Isotype | IgG |
| Clonality | Polyclonal |
| Alias | V-type proton ATPase subunit B, brain isoform (V-ATPase subunit B 2) (Endomembrane proton pump 58 kDa subunit) (HO57) (Vacuolar proton pump subunit B 2), ATP6V1B2, ATP6B2 VPP3 |
| Immunogen Species | Homo sapiens (Human) |
| Research Area | Others |
| Target Names | ATP6V1B2 |

Image



Western blot
 All lanes: ATP6V1B2 antibody at 5µg/ml + Hela whole cell lysate
 Secondary
 Goat polyclonal to rabbit IgG at 1/10000 dilution
 Predicted band size: 57 kDa
 Observed band size: 57 kDa

Usage For Research Use Only. Not for use in diagnostic or therapeutic procedures.