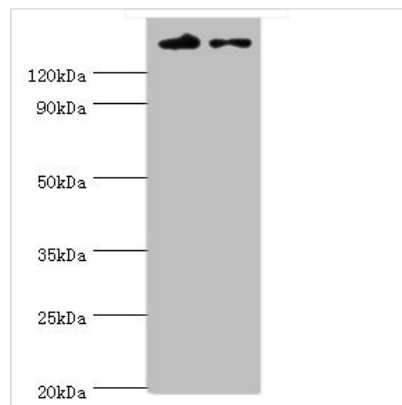




# SETDB1 Antibody

<b>Product Code</b>	CSB-PA619960ESR1HU
<b>Storage</b>	Upon receipt, store at -20°C or -80°C. Avoid repeated freeze.
<b>Uniprot No.</b>	Q15047
<b>Immunogen</b>	Recombinant Human Histone-lysine N-methyltransferase SETDB1 protein (1-397AA)
<b>Raised In</b>	Rabbit
<b>Species Reactivity</b>	Human, Rat
<b>Tested Applications</b>	ELISA, WB, IHC; Recommended dilution: WB:1:200-1:1000, IHC:1:20-1:200
<b>Form</b>	Liquid
<b>Conjugate</b>	Non-conjugated
<b>Storage Buffer</b>	PBS with 0.02% sodium azide, 50% glycerol, pH7.3.
<b>Purification Method</b>	Antigen Affinity Purified
<b>Isotype</b>	IgG
<b>Clonality</b>	Polyclonal
<b>Alias</b>	Histone-lysine N-methyltransferase SETDB1 (EC 2.1.1.43) (ERG-associated protein with SET domain) (ESET) (Histone H3-K9 methyltransferase 4) (H3-K9-HMTase 4) (Lysine N-methyltransferase 1E) (SET domain bifurcated 1), SETDB1, KIAA0067 KMT1E
<b>Immunogen Species</b>	Homo sapiens (Human)
<b>Research Area</b>	Epigenetics and Nuclear Signaling
<b>Target Names</b>	SETDB1

## Image



### Western blot

All lanes: SETDB1 antibody at 5µg/ml

Lane 1: Rat adrenal gland tissue

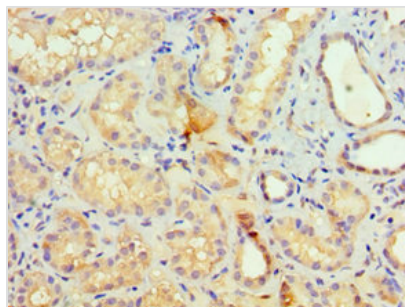
Lane 2: 293T whole cell lysate

Secondary

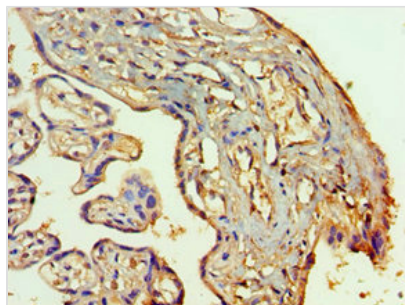
Goat polyclonal to rabbit IgG at 1/10000 dilution

Predicted band size: 144, 45 kDa

Observed band size: 144 kDa



Immunohistochemistry of paraffin-embedded human kidney tissue using CSB-PA619960ESR1HU at dilution of 1:100



Immunohistochemistry of paraffin-embedded human placenta tissue using CSB-PA619960ESR1HU at dilution of 1:100

## Usage

For Research Use Only. Not for use in diagnostic or therapeutic procedures.