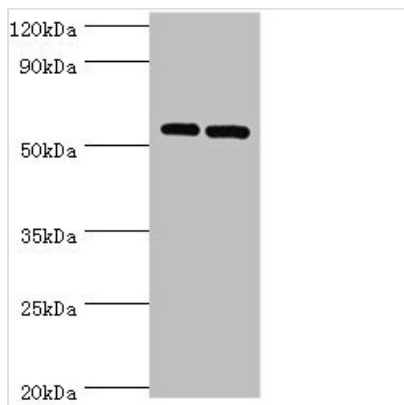




# PNPLA2 Antibody

<b>Product Code</b>	CSB-PA836180ESR1HU
<b>Storage</b>	Upon receipt, store at -20°C or -80°C. Avoid repeated freeze.
<b>Uniprot No.</b>	Q96AD5
<b>Immunogen</b>	Recombinant Human Patatin-like phospholipase domain-containing protein 2 protein (265-504AA)
<b>Raised In</b>	Rabbit
<b>Species Reactivity</b>	Human
<b>Tested Applications</b>	ELISA, WB, IHC; Recommended dilution: WB:1:200-1:1000, IHC:1:20-1:200
<b>Form</b>	Liquid
<b>Conjugate</b>	Non-conjugated
<b>Storage Buffer</b>	PBS with 0.02% sodium azide, 50% glycerol, pH7.3.
<b>Purification Method</b>	Antigen Affinity Purified
<b>Isotype</b>	IgG
<b>Clonality</b>	Polyclonal
<b>Alias</b>	Patatin-like phospholipase domain-containing protein 2 (EC 3.1.1.3) (Adipose triglyceride lipase) (Calcium-independent phospholipase A2) (Desnutrin) (IPLA2-zeta) (Pigment epithelium-derived factor) (TTS2.2) (Transport-secretion protein 2) (TTS2), PNPLA2, ATGL
<b>Immunogen Species</b>	Homo sapiens (Human)
<b>Research Area</b>	Cardiovascular
<b>Target Names</b>	PNPLA2

## Image



### Western blot

All lanes: PNPLA2 antibody at 10µg/ml

Lane 1: A431 whole cell lysate

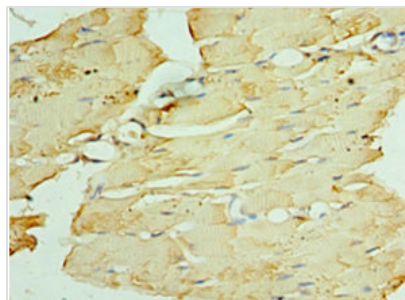
Lane 2: Hela whole cell lysate

Secondary

Goat polyclonal to rabbit IgG at 1/10000 dilution

Predicted band size: 56, 20 kDa

Observed band size: 56 kDa



Immunohistochemistry of paraffin-embedded human skeletal muscle tissue using CSB-PA836180ESR1HU at dilution of 1:100

---

**Usage**

For Research Use Only. Not for use in diagnostic or therapeutic procedures.